

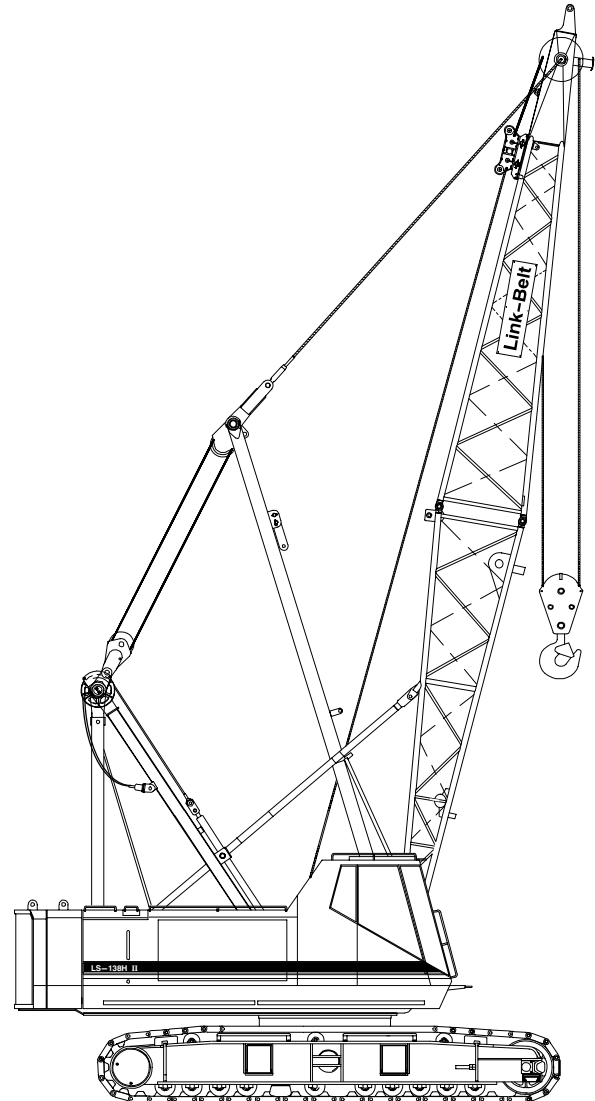
# Jib Capacities

Lattice Boom Crawler Crane

## **LS-138H II**      80-ton (72.6 metric ton)

### **Tubular Boom + Jib**

- 40'–190' (12.19 – 57.91 m) Tubular Boom
- 54" (1.37 m) wide x 44" (1.12 m) deep boom
- 30' – 60' (9.14 – 18.28 m) of Jib
- 20' (6.10 m) Open Throat Top Section
- 24' (7.31 m) Live Mast
- Extended Side Frames
- Over End Blocked Capacities
- "AB" Counterweight
- 20' – 2" (6.15 m) Crawler Length



**CAUTION: This material is supplied for reference use only. Operator must refer to in-cab Crane Rating Manual to determine allowable machine lifting capacities and operating procedures.**

---

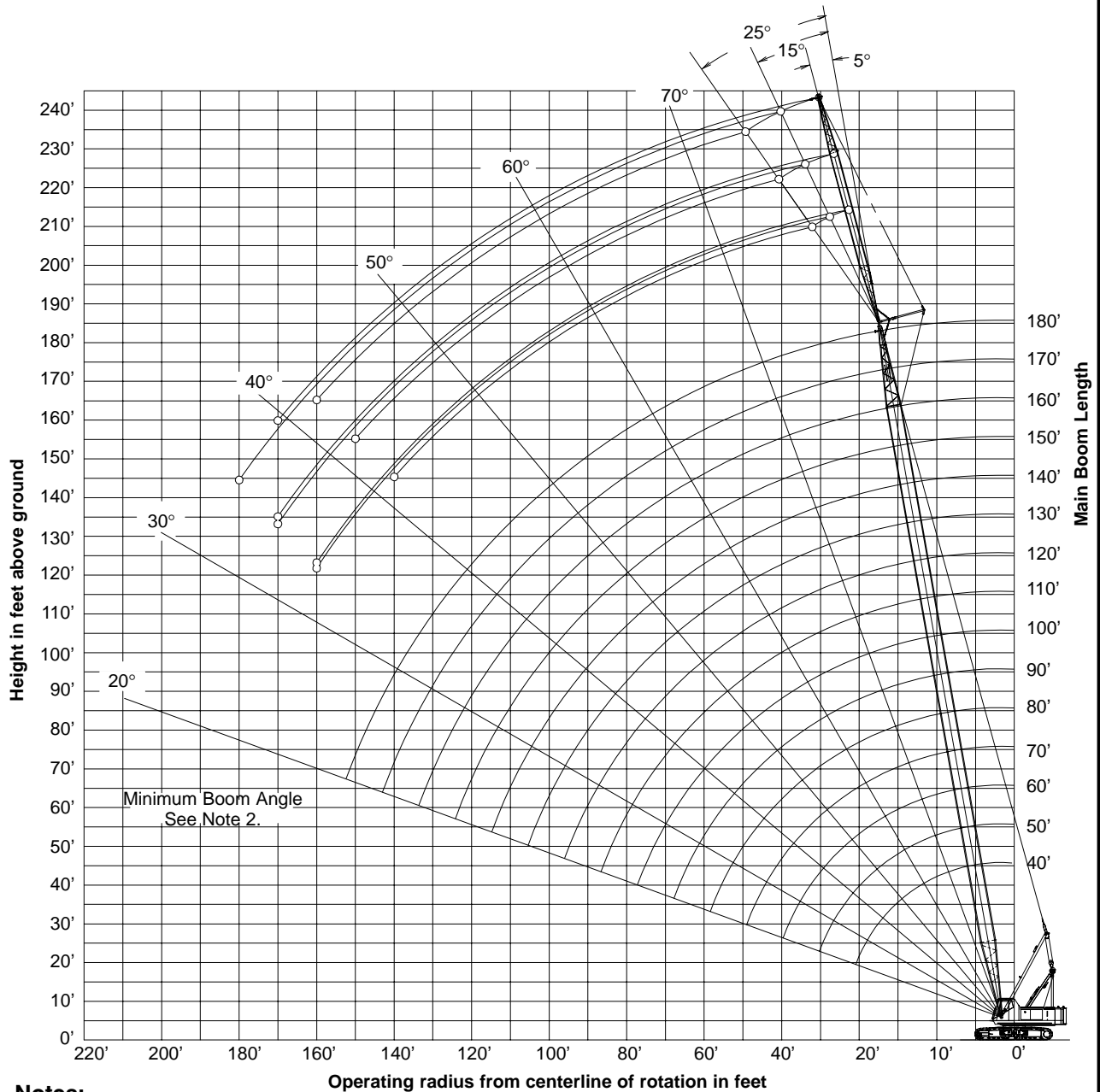
## TUBULAR JIB NOTES FOR OPEN THROAT BOOM

1. Capacities are for a LS-138H II crawler crane with AB (50,500 lb) counterweight.
2. Separate capacity charts are listed for 360° and for over-end blocked crawler working areas. Verify operating conditions as described on the Working Area Chart found in the general information section of this Crane Rating Manual. Apply the appropriate lift capacity chart based on the working area and the specific operating conditions.
3. Over-end blocked capacities can be lifted over either end with the crane standing level on a firm supporting surface. Adequate blocking must be placed under both treadmember sprockets/idlers to prevent rocking.
4. Capacities are for side frames in the extended position only and are based on the crane standing level on a firm supporting surface.
5. Capacities are limited to a LBCE 44" x 54" tubular boom with an open throat and a LBCE 12 ton, 24" x 32" cross section jib with a 11'6" high jib mast properly assembled.
6. Two parts of 7/8" Diameter Type "DB" or Type "RB" wire rope are required for maximum lift.
7. Capacities are for 30', 45', and 60' jib lengths only.
8. A jib cannot be used on open throat boom lengths longer than 190'. Maximum boom plus jib combination is 180' + 60' or 190' + 30'. The only jib length available on the 190' open throat boom length is 30'. Midpoint pendants must be used with 190' + 30' combination.
9. The least stable condition is over the side.
10. All capacities are listed in pounds and are not more than 75% of the tipping loads. Those capacities followed by an asterisk (\*) are governed by factors other than those that would cause a tipping condition.
11. A deduction must be made from the jib capacities for the weight of the following: Main boom hook block or hook ball, jib hook block or hook ball, slings, grapple, load weighing devices, etc.

# WORKING RANGE DIAGRAM

## 40' TO 180' MAIN BOOM WITH 30' TO 60' JIB

Maximum Boom Angle  
See Note 2.



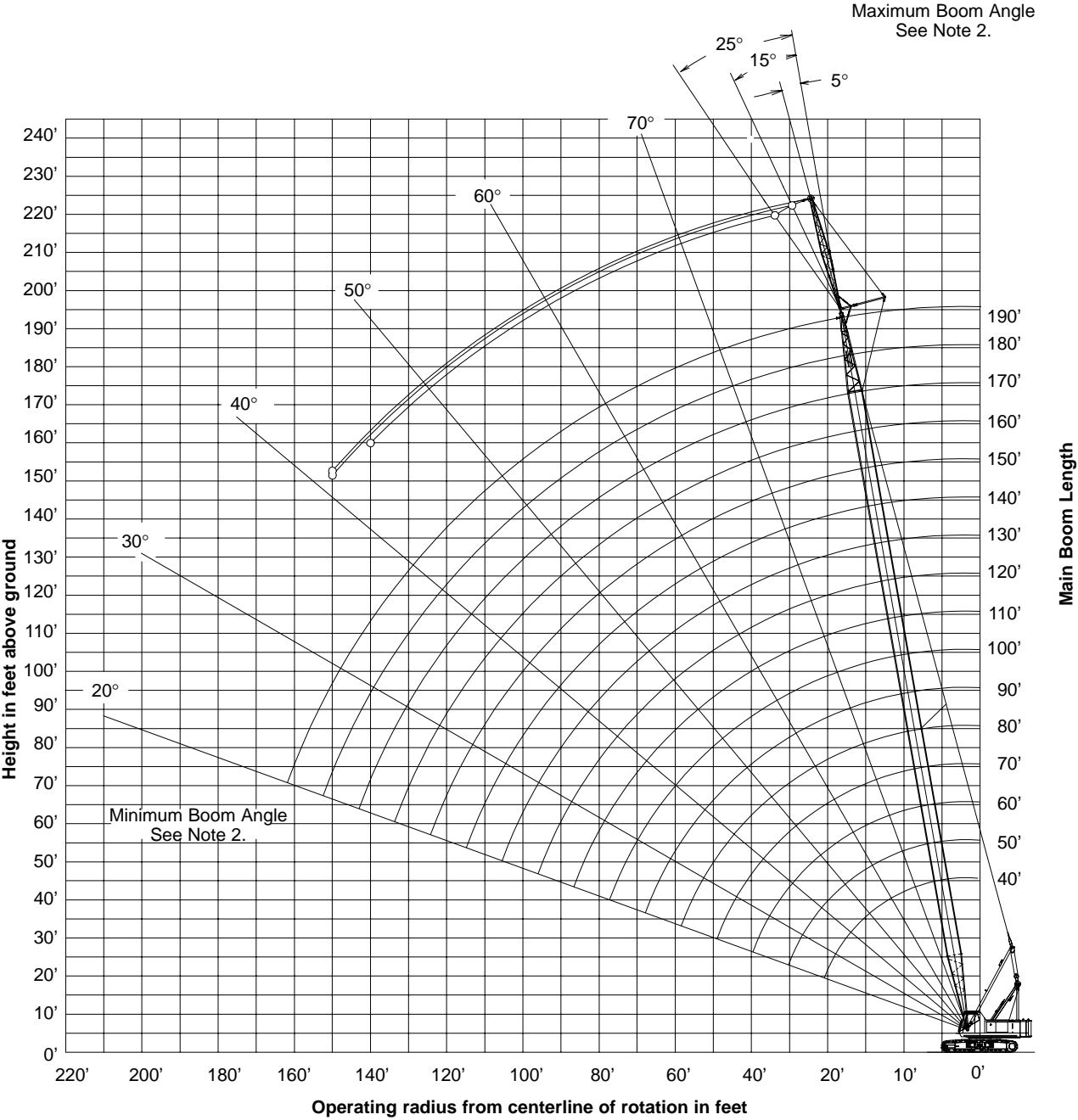
**Notes:**

1. Boom geometry shown is for unloaded condition and crane standing level on firm supporting surface. Boom deflection, subsequent radius and boom angle change must be accounted for when applying load to hook.
2. Maximum and minimum boom angles are equal to the values listed in the capacity chart for each boom length.

**Working Range Diagram**

# WORKING RANGE DIAGRAM

## 190' MAIN BOOM WITH 30' JIB



**Notes:**

1. Boom geometry shown is for unloaded condition and crane standing level on firm supporting surface. Boom deflection, subsequent radius and boom angle change must be accounted for when applying load to hook.
2. Maximum and minimum boom angles are equal to the values listed in the capacity chart for each boom length.

**Working Range Diagram**

**LS-138H II - w/ 44" x 54" Tube Boom, w/ 24" x 32" Tube Jib, w/ "AB" Ctw**

Refer to the Tubular Jib Notes for Open Throat Boom in this Crane Rating Manual before operating the machine.

Boom Length (ft)	Jib Length (ft)	Jib Load Radius (ft)	Jib Angle to Boom												Jib Load Radius (ft)
			5 Degrees				15 Degrees				25 Degrees				
			Boom Angle (deg)	Jib Point Height (ft)	Over End Jib Capacity (lbs)	360° Jib Capacity (lbs)	Boom Angle (deg)	Jib Point Height (ft)	Over End Jib Capacity (lbs)	360° Jib Capacity (lbs)	Boom Angle (deg)	Jib Point Height (ft)	Over End Jib Capacity (lbs)	360° Jib Capacity (lbs)	
40	30	18.38	80.0	76.4	24,000 *	24,000 *									18.38
40	30	19	79.5	76.3	24,000 *	24,000 *									19
40	30	20	78.7	76.0	24,000 *	24,000 *									20
40	30	25	74.6	74.7	24,000 *	24,000 *	78.6	74.2	24,000 *	24,000 *					25
40	30	30	70.4	72.9	24,000 *	24,000 *	74.3	72.4	24,000 *	24,000 *	78.1	71.2	19,800 *	19,800 *	30
40	30	35	66.0	70.7	24,000 *	24,000 *	69.9	70.2	23,800 *	23,800 *	73.6	68.9	17,800 *	17,800 *	35
40	30	40	61.5	68.0	24,000 *	24,000 *	65.4	67.5	21,200 *	21,200 *	69.0	66.2	17,000 *	17,000 *	40
40	30	50	51.7	60.8	21,100 *	21,100 *	55.5	60.4	17,400 *	17,400 *	58.9	58.8	14,800 *	14,800 *	50
40	30	60	40.3	50.5	17,400 *	17,400 *	43.9	49.9	16,300 *	16,300 *	46.9	47.9	13,300 *	13,300 *	60
40	45	25	78.2	89.9	24,000 *	24,000 *									25
40	45	30	74.7	88.4	24,000 *	24,000 *	79.7	87.8	19,200 *	19,200 *					30
40	45	35	71.2	86.6	21,800 *	21,800 *	76.2	86.0	17,300 *	17,300 *					35
40	45	40	67.7	84.4	19,100 *	19,100 *	72.6	83.8	16,700 *	16,700 *	77.4	82.1	12,600 *	12,600 *	40
40	45	50	60.2	78.8	16,700 *	16,700 *	65.1	78.3	13,600 *	13,600 *	69.6	76.4	10,600 *	10,600 *	50
40	45	60	52.0	71.3	13,700 *	13,700 *	56.8	70.7	11,500 *	11,500 *	61.2	68.7	9,200 *	9,200 *	60
40	45	70	42.6	61.1	11,700 *	11,700 *	47.3	60.4	10,000 *	10,000 *	51.3	58.0	8,200 *	8,200 *	70
40	45	80	30.9	46.3	10,200 *	10,200 *									80
40	60	30	77.8	104.2	21,200 *	21,200 *									30
40	60	35	74.8	102.7	18,300 *	18,300 *									35
40	60	40	71.9	100.9	17,300 *	17,300 *	77.6	100.3	13,800 *	13,800 *					40
40	60	50	65.7	96.3	13,800 *	13,800 *	71.4	95.7	11,200 *	11,200 *	76.8	93.8	8,600 *	8,600 *	50
40	60	60	59.2	90.4	11,300 *	11,300 *	64.8	89.8	9,400 *	9,400 *	70.1	87.7	7,400 *	7,400 *	60
40	60	70	52.2	82.7	9,600 *	9,600 *	57.7	82.1	8,100 *	8,100 *	62.8	79.7	6,500 *	6,500 *	70
40	60	80	44.3	72.7	8,300 *	8,300 *	49.6	72.0	7,100 *	7,100 *	54.5	69.3	5,800 *	5,800 *	80
40	60	90	34.8	59.2	7,300 *	7,300 *	40.0	58.2	6,400 *	6,400 *					90
50	30	25	76.5	85.1	24,000 *	24,000 *									25
50	30	30	72.9	83.5	24,000 *	24,000 *	76.3	83.1	24,000 *	24,000 *	79.7	81.7	20,600 *	20,600 *	30
50	30	35	69.1	81.6	24,000 *	24,000 *	72.6	81.2	24,000 *	24,000 *	75.8	79.8	18,700 *	18,700 *	35

**LS-138H II - w/ 44" x 54" Tube Boom, w/ 24" x 32" Tube Jib, w/ "AB" Cwt**

Refer to the Tubular Jib Notes for Open Throat Boom in this Crane Rating Manual before operating the machine.

Boom Length (ft)	Jib Length (ft)	Jib Load Radius (ft)	Jib Angle to Boom												Jib Load Radius (ft)
			5 Degrees				15 Degrees				25 Degrees				
			Boom Angle (deg)	Jib Point Height (ft)	Over End Jib Capacity (lbs)	360° Jib Capacity (lbs)	Boom Angle (deg)	Jib Point Height (ft)	Over End Jib Capacity (lbs)	360° Jib Capacity (lbs)	Boom Angle (deg)	Jib Point Height (ft)	Over End Jib Capacity (lbs)	360° Jib Capacity (lbs)	
50	30	40	65.3	79.3	24,000 *	24,000 *	68.7	78.9	23,000 *	23,000 *	71.9	77.4	17,400 *	17,400 *	40
50	30	50	57.2	73.4	23,800 *	23,700 *	60.5	72.9	19,000 *	19,000 *	63.6	71.4	15,700 *	15,700 *	50
50	30	60	48.2	65.3	19,700 *	19,700 *	51.4	64.7	17,400 *	17,400 *	54.2	62.9	14,100 *	14,100 *	60
50	30	70	37.5	53.8	17,400 *	16,600 *	40.6	53.1	15,800 *	15,700 *					70
50	45	25	79.4	100.2	24,000 *	24,000 *									25
50	45	30	76.4	98.9	24,000 *	24,000 *									30
50	45	35	73.3	97.3	23,600 *	23,600 *	77.7	96.6	17,800 *	17,800 *					35
50	45	40	70.1	95.3	20,800 *	20,800 *	74.6	94.7	17,300 *	17,300 *	78.8	92.9	13,000 *	13,000 *	40
50	45	50	63.6	90.5	17,300 *	17,300 *	68.0	89.8	14,600 *	14,600 *	72.1	87.9	11,100 *	11,100 *	50
50	45	60	56.6	84.1	15,200 *	15,200 *	60.9	83.4	12,400 *	12,400 *	64.9	81.3	9,700 *	9,700 *	60
50	45	70	48.9	75.7	12,900 *	13,000 *	53.2	75.0	10,800 *	10,800 *	56.9	72.6	8,700 *	8,700 *	70
50	45	80	40.2	64.6	11,300 *	11,300 *	44.2	63.7	9,700 *	9,700 *	47.7	61.0	8,000 *	8,000 *	80
50	45	90	29.1	48.7	10,000 *	10,000 *									90
50	60	30	78.9	114.5	22,600 *	22,600 *									30
50	60	35	76.2	113.1	19,500 *	19,500 *									35
50	60	40	73.6	111.5	17,200 *	17,200 *	78.8	110.8	14,400 *	14,400 *					40
50	60	50	68.1	107.4	15,000 *	15,000 *	73.2	106.8	11,800 *	11,800 *	78.1	104.6	8,900 *	8,900 *	50
50	60	60	62.3	102.2	12,400 *	12,400 *	67.4	101.5	10,000 *	10,000 *	72.2	99.2	7,700 *	7,700 *	60
50	60	70	56.2	95.5	10,500 *	10,500 *	61.2	94.8	8,600 *	8,600 *	65.9	92.3	6,800 *	6,800 *	70
50	60	80	49.5	87.1	9,100 *	9,100 *	54.4	86.3	7,600 *	7,600 *	59.0	83.6	6,100 *	6,100 *	80
50	60	90	42.0	76.3	8,000 *	8,000 *	46.8	75.5	6,800 *	6,800 *	51.1	72.3	5,600 *	5,600 *	90
50	60	100	33.1	61.9	7,200 *	7,200 *	37.7	60.8	6,200 *	6,200 *					100
60	30	25	78.0	95.4	24,000 *	24,000 *									25
60	30	30	74.8	94.0	24,000 *	24,000 *	77.9	93.5	24,000 *	24,000 *					30
60	30	35	71.5	92.4	24,000 *	24,000 *	74.6	91.9	24,000 *	24,000 *	77.5	90.4	19,500 *	19,500 *	35
60	30	40	68.2	90.4	24,000 *	24,000 *	71.2	89.9	24,000 *	24,000 *	74.1	88.4	18,000 *	18,000 *	40
60	30	50	61.2	85.3	24,000 *	24,000 *	64.2	84.8	20,500 *	20,500 *	66.9	83.2	16,400 *	16,400 *	50
60	30	60	53.6	78.5	21,900 *	20,100 *	56.6	77.9	17,700 *	17,700 *	59.2	76.2	14,800 *	14,800 *	60
60	30	70	45.3	69.4	18,700 *	16,400 *	48.1	68.8	17,200 *	16,600 *	50.5	66.8	13,600 *	13,600 *	70

**LS-138H II - w/ 44" x 54" Tube Boom, w/ 24" x 32" Tube Jib, w/ "AB" Ctw**

Refer to the Tubular Jib Notes for Open Throat Boom in this Crane Rating Manual before operating the machine.

Boom Length (ft)	Jib Length (ft)	Jib Load Radius (ft)	Jib Angle to Boom												Jib Load Radius (ft)
			5 Degrees				15 Degrees				25 Degrees				
			Boom Angle (deg)	Jib Point Height (ft)	Over End Jib Capacity (lbs)	360° Jib Capacity (lbs)	Boom Angle (deg)	Jib Point Height (ft)	Over End Jib Capacity (lbs)	360° Jib Capacity (lbs)	Boom Angle (deg)	Jib Point Height (ft)	Over End Jib Capacity (lbs)	360° Jib Capacity (lbs)	
60	30	80	35.3	56.9	16,100	13,700	37.9	56.1	15,400 *	13,800					80
60	45	30	77.7	109.3	24,000 *	24,000 *									30
60	45	35	74.9	107.8	24,000 *	24,000 *	78.9	107.1	18,600 *	18,600 *					35
60	45	40	72.1	106.1	22,500 *	22,500 *	76.1	105.4	17,300 *	17,300 *	79.9	103.4	13,400 *	13,400 *	40
60	45	50	66.2	101.8	18,100 *	18,100 *	70.2	101.0	15,500 *	15,500 *	74.0	99.0	11,600 *	11,600 *	50
60	45	60	60.1	96.1	16,700 *	16,700 *	64.1	95.4	13,300 *	13,300 *	67.7	93.3	10,200 *	10,200 *	60
60	45	70	53.6	89.0	14,200 *	14,200 *	57.4	88.2	11,600 *	11,600 *	60.9	85.9	9,200 *	9,200 *	70
60	45	80	46.4	79.9	12,400 *	12,400 *	50.1	79.0	10,400 *	10,400 *	53.4	76.4	8,400 *	8,400 *	80
60	45	90	38.1	67.9	11,000 *	11,000 *	41.7	66.9	9,400 *	9,400 *					90
60	45	100	27.6	51.0	9,900 *	9,900 *									100
60	60	30	79.8	124.8	23,900 *	23,900 *									30
60	60	35	77.4	123.5	20,800 *	20,800 *									35
60	60	40	75.0	122.0	18,300 *	18,300 *	79.7	121.3	15,000 *	15,000 *					40
60	60	50	70.0	118.3	16,200 *	16,200 *	74.7	117.6	12,400 *	12,400 *	79.2	115.3	9,100 *	9,100 *	50
60	60	60	64.8	113.6	13,400 *	13,400 *	69.5	112.9	10,500 *	10,600 *	73.9	110.5	8,000 *	8,000 *	60
60	60	70	59.3	107.7	11,300 *	11,300 *	64.0	106.9	9,200 *	9,200 *	68.3	104.4	7,100 *	7,100 *	70
60	60	80	53.5	100.4	9,800 *	9,800 *	58.1	99.5	8,100 *	8,100 *	62.3	96.8	6,400 *	6,400 *	80
60	60	90	47.2	91.3	8,700 *	8,700 *	51.7	90.4	7,300 *	7,300 *	55.7	87.3	5,800 *	5,800 *	90
60	60	100	40.1	79.8	7,800 *	7,800 *	44.4	78.7	6,600 *	6,600 *	48.1	75.2	5,400 *	5,400 *	100
60	60	110	31.6	64.6	7,000 *	7,000 *	35.7	63.1	6,100 *	6,100 *					110
70	30	25	79.2	105.7	24,000 *	24,000 *									25
70	30	30	76.3	104.4	24,000 *	24,000 *	79.1	103.9	24,000 *	24,000 *					30
70	30	35	73.4	102.9	24,000 *	24,000 *	76.2	102.4	24,000 *	24,000 *	78.8	101.0	20,100 *	20,100 *	35
70	30	40	70.4	101.2	24,000 *	24,000 *	73.2	100.6	24,000 *	24,000 *	75.8	99.1	18,600 *	18,600 *	40
70	30	50	64.3	96.7	24,000 *	24,000 *	67.0	96.1	21,900 *	21,900 *	69.5	94.6	17,100 *	17,100 *	50
70	30	60	57.7	90.8	23,500	19,900	60.4	90.2	18,900 *	18,900 *	62.8	88.5	15,500 *	15,500 *	60
70	30	70	50.7	83.2	19,000	16,200	53.3	82.6	17,300 *	16,400	55.5	80.7	14,200 *	14,200 *	70
70	30	80	42.8	73.3	15,900	13,500	45.3	72.6	16,000	13,600	47.3	70.4	13,300 *	13,300 *	80
70	30	90	33.4	59.8	13,500	11,400	35.7	58.9	13,600	11,500					90

**LS-138H II - w/ 44" x 54" Tube Boom, w/ 24" x 32" Tube Jib, w/ "AB" Cwt**

Refer to the Tubular Jib Notes for Open Throat Boom in this Crane Rating Manual before operating the machine.

Boom Length (ft)	Jib Length (ft)	Jib Load Radius (ft)	Jib Angle to Boom												Jib Load Radius (ft)	
			5 Degrees				15 Degrees				25 Degrees					
			Boom Angle (deg)	Jib Point Height (ft)	Over End Jib Capacity (lbs)	360° Jib Capacity (lbs)	Boom Angle (deg)	Jib Point Height (ft)	Over End Jib Capacity (lbs)	360° Jib Capacity (lbs)	Boom Angle (deg)	Jib Point Height (ft)	Over End Jib Capacity (lbs)	360° Jib Capacity (lbs)		
70	45	30	78.7	119.6	24,000 *	24,000 *										30
70	45	35	76.2	118.3	24,000 *	24,000 *	79.9	117.5	19,300 *	19,300 *						35
70	45	40	73.7	116.7	24,000 *	24,000 *	77.3	115.9	17,500 *	17,500 *						40
70	45	50	68.4	112.8	19,500 *	19,500 *	72.1	112.0	16,400 *	16,400 *	75.5	109.9	12,000 *	12,000 *		50
70	45	60	63.0	107.8	17,300 *	17,300 *	66.6	107.0	14,100 *	14,100 *	69.9	104.8	10,600 *	10,600 *		60
70	45	70	57.2	101.5	15,400 *	15,400 *	60.7	100.7	12,300 *	12,400 *	64.0	98.3	9,600 *	9,600 *		70
70	45	80	51.0	93.6	13,500 *	13,400 *	54.5	92.8	11,000 *	11,000 *	57.5	90.2	8,800 *	8,800 *		80
70	45	90	44.2	83.8	11,900 *	11,600 *	47.5	82.8	10,000 *	10,000 *	50.4	80.0	8,100 *	8,100 *		90
70	45	100	36.3	71.0	10,800 *	10,000 *	39.5	69.9	9,200 *	9,200 *						100
70	60	35	78.4	133.9	21,900 *	21,900 *										35
70	60	40	76.1	132.5	19,400 *	19,400 *										40
70	60	50	71.6	129.1	17,300 *	17,300 *	75.9	128.3	12,900 *	12,900 *						50
70	60	60	66.8	124.8	14,300 *	14,300 *	71.2	124.0	11,100 *	11,100 *	75.3	121.5	8,200 *	8,200 *		60
70	60	70	61.9	119.5	12,200 *	12,200 *	66.2	118.6	9,700 *	9,700 *	70.2	116.0	7,300 *	7,300 *		70
70	60	80	56.8	112.9	10,600 *	10,600 *	61.0	112.1	8,600 *	8,600 *	64.9	109.3	6,600 *	6,600 *		80
70	60	90	51.2	105.0	9,400 *	9,400 *	55.4	104.1	7,700 *	7,700 *	59.1	101.0	6,100 *	6,100 *		90
70	60	100	45.2	95.3	8,400 *	8,400 *	49.3	94.2	7,000 *	7,000 *	52.8	90.9	5,600 *	5,600 *		100
70	60	110	38.4	83.1	7,600 *	7,600 *	42.3	81.9	6,500 *	6,500 *	45.6	78.0	5,300 *	5,300 *		110
70	60	120	30.2	67.1	7,000 *	6,900 *										120
80	30	30	77.6	114.8	24,000 *	24,000 *										30
80	30	35	74.9	113.4	24,000 *	24,000 *	77.5	112.8	24,000 *	24,000 *	79.9	111.4	20,600 *	20,600 *		35
80	30	40	72.2	111.8	24,000 *	24,000 *	74.8	111.2	24,000 *	24,000 *	77.1	109.7	19,200 *	19,200 *		40
80	30	50	66.7	107.8	24,000 *	24,000 *	69.2	107.2	23,200 *	23,200 *	71.5	105.6	17,300 *	17,300 *		50
80	30	60	61.0	102.6	23,300	19,700	63.4	102.0	20,100 *	20,000	65.6	100.3	16,100 *	16,100 *		60
80	30	70	54.8	96.0	18,800	16,000	57.2	95.4	17,800 *	16,300	59.3	93.6	14,800 *	14,800 *		70
80	30	80	48.2	87.6	15,700	13,300	50.5	87.0	15,900	13,400	52.5	85.0	13,800 *	13,600		80
80	30	90	40.7	77.0	13,300	11,200	42.9	76.2	13,400	11,300						90
80	30	100	31.8	62.6	11,400	9,500										100



**LS-138H II - w/ 44" x 54" Tube Boom, w/ 24" x 32" Tube Jib, w/ "AB" Cwt**

Refer to the Tubular Jib Notes for Open Throat Boom in this Crane Rating Manual before operating the machine.

Boom Length (ft)	Jib Length (ft)	Jib Load Radius (ft)	Jib Angle to Boom												Jib Load Radius (ft)
			5 Degrees				15 Degrees				25 Degrees				
			Boom Angle (deg)	Jib Point Height (ft)	Over End Jib Capacity (lbs)	360° Jib Capacity (lbs)	Boom Angle (deg)	Jib Point Height (ft)	Over End Jib Capacity (lbs)	360° Jib Capacity (lbs)	Boom Angle (deg)	Jib Point Height (ft)	Over End Jib Capacity (lbs)	360° Jib Capacity (lbs)	
80	45	30	79.6	129.8	24,000 *	24,000 *									30
80	45	35	77.3	128.6	24,000 *	24,000 *									35
80	45	40	75.0	127.2	24,000 *	24,000 *	78.4	126.4	18,200 *	18,200 *					40
80	45	50	70.2	123.6	20,800 *	20,800 *	73.6	122.8	17,200 *	17,200 *	76.7	120.7	12,300 *	12,300 *	50
80	45	60	65.3	119.1	17,500 *	17,500 *	68.6	118.3	14,800 *	14,800 *	71.7	116.0	11,000 *	11,000 *	60
80	45	70	60.1	113.5	16,600 *	16,300 *	63.4	112.6	13,100 *	13,100 *	66.4	110.3	9,900 *	9,900 *	70
80	45	80	54.7	106.5	14,500 *	13,500 *	57.9	105.7	11,700 *	11,700 *	60.7	103.1	9,100 *	9,100 *	80
80	45	90	48.8	98.1	12,900 *	11,400 *	51.9	97.1	10,600 *	10,600 *	54.6	94.4	8,500 *	8,500 *	90
80	45	100	42.2	87.5	11,600 *	9,800 *	45.3	86.5	9,800 *	9,800 *	47.8	83.4	7,900 *	8,000 *	100
80	45	110	34.7	74.0	10,100	8,400	37.6	72.8	9,100 *	8,500					110
80	60	35	79.2	144.1	23,000 *	23,000 *									35
80	60	40	77.1	142.9	20,400 *	20,400 *									40
80	60	50	72.9	139.8	17,300 *	17,300 *	77.0	138.9	13,400 *	13,400 *					50
80	60	60	68.6	135.8	15,300 *	15,300 *	72.6	134.9	11,600 *	11,600 *	76.4	132.3	8,400 *	8,400 *	60
80	60	70	64.1	130.9	13,000 *	13,000 *	68.1	130.0	10,100 *	10,100 *	71.8	127.3	7,600 *	7,600 *	70
80	60	80	59.4	125.0	11,300 *	11,300 *	63.4	124.1	9,000 *	9,000 *	67.0	121.3	6,900 *	6,900 *	80
80	60	90	54.5	117.9	10,000 *	10,000 *	58.4	117.0	8,100 *	8,100 *	61.9	113.9	6,300 *	6,300 *	90
80	60	100	49.2	109.4	9,000 *	9,000 *	53.0	108.4	7,400 *	7,400 *	56.4	105.1	5,900 *	5,900 *	100
80	60	110	43.4	99.1	8,100 *	8,100 *	47.2	97.9	6,800 *	6,800 *	50.3	94.3	5,500 *	5,500 *	110
80	60	120	36.9	86.3	7,400 *	7,400 *	40.5	84.9	6,300 *	6,300 *					120
80	60	130	29.0	69.5	6,900 *	6,500									130
90	30	30	78.6	125.0	24,000 *	24,000 *									30
90	30	35	76.2	123.8	24,000 *	24,000 *	78.5	123.2	24,000 *	24,000 *					35
90	30	40	73.7	122.3	24,000 *	24,000 *	76.1	121.8	24,000 *	24,000 *	78.3	120.2	19,700 *	19,700 *	40
90	30	50	68.7	118.7	24,000 *	24,000 *	71.0	118.1	24,000 *	24,000 *	73.2	116.5	17,500 *	17,500 *	50
90	30	60	63.6	114.0	23,100	19,500	65.8	113.4	21,200 *	19,800	67.9	111.8	16,600 *	16,600 *	60
90	30	70	58.1	108.2	18,600	15,800	60.4	107.5	18,900	16,100	62.3	105.8	15,300 *	15,300 *	70
90	30	80	52.3	100.9	15,500	13,100	54.5	100.2	15,700	13,300	56.4	98.3	14,300 *	13,400	80
90	30	90	46.0	91.9	13,100	11,000	48.1	91.1	13,200	11,100	49.8	89.0	13,400	11,300	90
90	30	100	38.9	80.4	11,200	9,300	40.9	79.6	11,300	9,400					100

**LS-138H II - w/ 44" x 54" Tube Boom, w/ 24" x 32" Tube Jib, w/ "AB" Cwt**

Refer to the Tubular Jib Notes for Open Throat Boom in this Crane Rating Manual before operating the machine.

Boom Length (ft)	Jib Length (ft)	Jib Load Radius (ft)	Jib Angle to Boom												Jib Load Radius (ft)
			5 Degrees				15 Degrees				25 Degrees				
			Boom Angle (deg)	Jib Point Height (ft)	Over End Jib Capacity (lbs)	360° Jib Capacity (lbs)	Boom Angle (deg)	Jib Point Height (ft)	Over End Jib Capacity (lbs)	360° Jib Capacity (lbs)	Boom Angle (deg)	Jib Point Height (ft)	Over End Jib Capacity (lbs)	360° Jib Capacity (lbs)	
90	30	110	30.4	65.3	9,600	8,000									110
90	45	35	78.3	138.9	24,000 *	24,000 *									35
90	45	40	76.1	137.6	24,000 *	24,000 *	79.3	136.7	18,700 *	18,700 *					40
90	45	50	71.7	134.3	22,100 *	22,000 *	74.8	133.5	17,300 *	17,300 *	77.8	131.3	12,600 *	12,600 *	50
90	45	60	67.2	130.2	18,600 *	18,600 *	70.3	129.3	15,500 *	15,500 *	73.2	127.1	11,300 *	11,300 *	60
90	45	70	62.5	125.1	17,300 *	16,100 *	65.6	124.2	13,700 *	13,700 *	68.4	121.8	10,300 *	10,300 *	70
90	45	80	57.6	118.9	15,600 *	13,300 *	60.6	118.0	12,300 *	12,300 *	63.3	115.5	9,500 *	9,400 *	80
90	45	90	52.4	111.4	13,300	11,200	55.4	110.4	11,200 *	11,200 *	57.9	107.7	8,800 *	8,800 *	90
90	45	100	46.8	102.3	11,400	9,500	49.7	101.3	10,300 *	9,700	52.1	98.3	8,200 *	8,200 *	100
90	45	110	40.5	91.1	9,900	8,200	43.3	90.0	9,500 *	8,400					110
90	45	120	33.3	76.9	8,600	7,100	35.9	75.5	8,700	7,200					120
90	60	35	79.9	154.4	24,000 *	24,000 *									35
90	60	40	78.0	153.2	21,400 *	21,400 *									40
90	60	50	74.1	150.3	17,500 *	17,500 *	77.9	149.4	13,900 *	13,900 *					50
90	60	60	70.1	146.6	16,200 *	16,200 *	73.8	145.7	12,000 *	12,000 *	77.4	143.0	8,600 *	8,600 *	60
90	60	70	66.0	142.2	13,900 *	13,900 *	69.7	141.2	10,600 *	10,600 *	73.2	138.4	7,800 *	7,800 *	70
90	60	80	61.7	136.8	12,100 *	12,100 *	65.4	135.8	9,400 *	9,400 *	68.8	132.9	7,100 *	7,100 *	80
90	60	90	57.2	130.3	10,700 *	10,700 *	60.9	129.3	8,500 *	8,500 *	64.2	126.3	6,500 *	6,500 *	90
90	60	100	52.5	122.7	9,600 *	9,600 *	56.1	121.7	7,800 *	7,800 *	59.3	118.4	6,100 *	6,100 *	100
90	60	110	47.4	113.7	8,700 *	8,300 *	50.9	112.5	7,200 *	7,200 *	54.0	109.0	5,700 *	5,700 *	110
90	60	120	41.9	102.8	7,900 *	7,200 *	45.3	101.5	6,700 *	6,700 *	48.1	97.6	5,400 *	5,400 *	120
90	60	130	35.6	89.3	7,300 *	6,300 *	38.9	87.8	6,200 *	6,200 *					130
90	60	140	28.0	71.8	6,800	5,500									140
100	30	30	79.5	135.3	24,000 *	24,000 *									30
100	30	35	77.2	134.1	24,000 *	24,000 *	79.4	133.5	24,000 *	24,000 *					35
100	30	40	75.0	132.8	24,000 *	24,000 *	77.2	132.2	24,000 *	24,000 *	79.2	130.6	20,200 *	20,200 *	40
100	30	50	70.4	129.4	24,000 *	24,000 *	72.6	128.9	24,000 *	24,000 *	74.5	127.2	18,000 *	18,000 *	50
100	30	60	65.7	125.2	22,900	19,300	67.8	124.6	22,300 *	19,600	69.7	122.9	17,100 *	17,100 *	60
100	30	70	60.8	119.9	18,400	15,700	62.9	119.3	18,700	15,900	64.7	117.5	15,800 *	15,800 *	70

**LS-138H II - w/ 44" x 54" Tube Boom, w/ 24" x 32" Tube Jib, w/ "AB" Cwt**

Refer to the Tubular Jib Notes for Open Throat Boom in this Crane Rating Manual before operating the machine.

Boom Length (ft)	Jib Length (ft)	Jib Load Radius (ft)	Jib Angle to Boom												Jib Load Radius (ft)
			5 Degrees				15 Degrees				25 Degrees				
			Boom Angle (deg)	Jib Point Height (ft)	Over End Jib Capacity (lbs)	360° Jib Capacity (lbs)	Boom Angle (deg)	Jib Point Height (ft)	Over End Jib Capacity (lbs)	360° Jib Capacity (lbs)	Boom Angle (deg)	Jib Point Height (ft)	Over End Jib Capacity (lbs)	360° Jib Capacity (lbs)	
100	30	80	55.6	113.4	15,300	12,900	57.7	112.8	15,500	13,100	59.4	110.9	14,800 *	13,300	80
100	30	90	50.1	105.6	12,900	10,800	52.1	104.9	13,100	11,000	53.8	102.8	13,200	11,100	90
100	30	100	44.1	95.9	11,000	9,100	46.0	95.1	11,100	9,300	47.6	92.8	11,200	9,400	100
100	30	110	37.3	83.8	9,500	7,800	39.1	82.8	9,500	7,900					110
100	30	120	29.1	67.8	8,200	6,700									120
100	45	35	79.1	149.2	24,000 *	24,000 *									35
100	45	40	77.1	148.0	24,000 *	24,000 *									40
100	45	50	73.0	144.9	22,900 *	22,900 *	75.9	144.1	17,300 *	17,300 *	78.7	141.8	12,900 *	12,900 *	50
100	45	60	68.9	141.1	19,700 *	19,500	71.7	140.2	16,200 *	16,200 *	74.4	137.9	11,600 *	11,600 *	60
100	45	70	64.6	136.4	17,100 *	15,900	67.4	135.5	14,300 *	14,300 *	70.0	133.1	10,600 *	10,600 *	70
100	45	80	60.1	130.8	15,600	13,100	62.9	129.9	12,900 *	12,900 *	65.5	127.3	9,800 *	9,800 *	80
100	45	90	55.4	124.0	13,100	11,000	58.2	123.1	11,700 *	11,200	60.6	120.4	9,100 *	9,100 *	90
100	45	100	50.4	116.0	11,200	9,300	53.1	115.0	10,800 *	9,500	55.5	112.1	8,500 *	8,500 *	100
100	45	110	45.0	106.3	9,700	8,000	47.7	105.2	9,800	8,200	49.9	102.1	8,100 *	8,100 *	110
100	45	120	39.0	94.6	8,400	6,900	41.6	93.3	8,500	7,000					120
100	45	130	32.1	79.7	7,300	6,000									130
100	60	40	78.8	163.5	22,300 *	22,300 *									40
100	60	50	75.1	160.8	18,300 *	18,300 *	78.7	159.8	14,300 *	14,300 *					50
100	60	60	71.4	157.4	17,100 *	17,100 *	74.9	156.4	12,400 *	12,400 *	78.3	153.7	8,800 *	8,800 *	60
100	60	70	67.5	153.2	14,700 *	14,700 *	71.0	152.2	11,000 *	11,000 *	74.3	149.4	8,000 *	8,000 *	70
100	60	80	63.6	148.2	12,800 *	12,800 *	67.1	147.2	9,800 *	9,800 *	70.3	144.3	7,300 *	7,300 *	80
100	60	90	59.5	142.4	11,300 *	11,100	62.9	141.3	8,900 *	8,900 *	66.1	138.3	6,700 *	6,700 *	90
100	60	100	55.2	135.4	10,200 *	9,500	58.6	134.4	8,100 *	8,100 *	61.6	131.1	6,300 *	6,300 *	100
100	60	110	50.7	127.3	9,200 *	8,100	54.0	126.2	7,500 *	7,500 *	56.9	122.8	5,900 *	5,900 *	110
100	60	120	45.8	117.8	8,400 *	7,000	49.1	116.5	7,000 *	7,000 *	51.8	112.8	5,600 *	5,600 *	120
100	60	130	40.4	106.3	7,500	6,100	43.6	104.9	6,500 *	6,300	46.2	100.8	5,300 *	5,300 *	130
100	60	140	34.3	92.3	6,600	5,300	37.4	90.6	6,200 *	5,400					140
100	60	150	27.0	74.1	5,800	4,600									150
110	30	35	78.2	144.4	24,000 *	24,000 *									35

**LS-138H II - w/ 44" x 54" Tube Boom, w/ 24" x 32" Tube Jib, w/ "AB" Cwt**

Refer to the Tubular Jib Notes for Open Throat Boom in this Crane Rating Manual before operating the machine.

Boom Length (ft)	Jib Length (ft)	Jib Load Radius (ft)	Jib Angle to Boom												Jib Load Radius (ft)
			5 Degrees				15 Degrees				25 Degrees				
			Boom Angle (deg)	Jib Point Height (ft)	Over End Jib Capacity (lbs)	360° Jib Capacity (lbs)	Boom Angle (deg)	Jib Point Height (ft)	Over End Jib Capacity (lbs)	360° Jib Capacity (lbs)	Boom Angle (deg)	Jib Point Height (ft)	Over End Jib Capacity (lbs)	360° Jib Capacity (lbs)	
110	30	40	76.1	143.2	24,000 *	24,000 *	78.1	142.5	24,000 *	24,000 *					40
110	30	50	71.9	140.1	24,000 *	24,000 *	73.9	139.5	24,000 *	24,000 *	75.7	137.9	18,500 *	18,500 *	50
110	30	60	67.5	136.2	22,700	19,100	69.5	135.6	22,900 *	19,500	71.3	133.9	17,300 *	17,300 *	60
110	30	70	63.1	131.3	18,200	15,500	65.0	130.7	18,500	15,700	66.7	129.0	16,300 *	16,000	70
110	30	80	58.4	125.5	15,100	12,700	60.3	124.9	15,400	12,900	62.0	123.0	15,200 *	13,100	80
110	30	90	53.5	118.5	12,700	10,600	55.3	117.8	12,900	10,800	56.9	115.8	13,000	10,900	90
110	30	100	48.2	110.0	10,800	8,900	50.0	109.3	10,900	9,100	51.5	107.1	11,100	9,200	100
110	30	110	42.4	99.7	9,300	7,600	44.2	98.9	9,400	7,700	45.5	96.5	9,500	7,800	110
110	30	120	35.9	87.0	8,000	6,500	37.5	86.0	8,100	6,600					120
110	30	130	28.0	70.3	6,900	5,600									130
110	45	35	79.8	159.4	24,000 *	24,000 *									35
110	45	40	77.9	158.3	24,000 *	24,000 *									40
110	45	50	74.1	155.5	22,900 *	22,900 *	76.9	154.5	17,100 *	17,100 *	79.4	152.3	13,100 *	13,200 *	50
110	45	60	70.3	151.9	20,000 *	19,300	73.0	151.0	16,800 *	16,800 *	75.5	148.7	11,900 *	11,900 *	60
110	45	70	66.3	147.6	17,600 *	15,700	69.0	146.7	14,900 *	14,900 *	71.4	144.2	10,900 *	10,900 *	70
110	45	80	62.2	142.4	15,400	12,900	64.9	141.5	13,400 *	13,200	67.3	138.9	10,100 *	10,100 *	80
110	45	90	57.9	136.2	12,900	10,800	60.5	135.3	12,300 *	11,100	62.9	132.6	9,400 *	9,400 *	90
110	45	100	53.4	129.0	11,000	9,100	56.0	128.0	11,200	9,400	58.2	125.2	8,800 *	8,800 *	100
110	45	110	48.7	120.4	9,400	7,800	51.2	119.4	9,600	8,000	53.3	116.4	8,300 *	8,200	110
110	45	120	43.5	110.2	8,200	6,700	45.9	109.1	8,300	6,800	47.9	105.8	7,900 *	7,000	120
110	45	130	37.7	97.9	7,100	5,800	40.0	96.6	7,200	5,900					130
110	45	140	31.0	82.4	6,200	5,000									140
110	60	40	79.4	173.8	22,700 *	22,600 *									40
110	60	50	76.0	171.2	19,100 *	19,100 *	79.4	170.2	14,700 *	14,700 *					50
110	60	60	72.5	168.0	17,200 *	17,200 *	75.8	167.0	12,800 *	12,800 *	79.0	164.2	9,000 *	9,000 *	60
110	60	70	68.9	164.1	15,400 *	15,400 *	72.2	163.1	11,400 *	11,400 *	75.3	160.2	8,200 *	8,200 *	70
110	60	80	65.3	159.5	13,500 *	13,000	68.5	158.5	10,200 *	10,200 *	71.6	155.5	7,500 *	7,500 *	80
110	60	90	61.5	154.1	12,000 *	10,900	64.7	153.0	9,300 *	9,300 *	67.7	149.9	6,900 *	6,900 *	90
110	60	100	57.5	147.7	10,800 *	9,300	60.7	146.6	8,500 *	8,500 *	63.6	143.4	6,500 *	6,500 *	100
110	60	110	53.4	140.3	9,600	7,900	56.6	139.2	7,800 *	7,800 *	59.4	135.8	6,100 *	6,100 *	110

**LS-138H II - w/ 44" x 54" Tube Boom, w/ 24" x 32" Tube Jib, w/ "AB" Cwt**

Refer to the Tubular Jib Notes for Open Throat Boom in this Crane Rating Manual before operating the machine.

Boom Length (ft)	Jib Length (ft)	Jib Load Radius (ft)	Jib Angle to Boom												Jib Load Radius (ft)
			5 Degrees				15 Degrees				25 Degrees				
			Boom Angle (deg)	Jib Point Height (ft)	Over End Jib Capacity (lbs)	360° Jib Capacity (lbs)	Boom Angle (deg)	Jib Point Height (ft)	Over End Jib Capacity (lbs)	360° Jib Capacity (lbs)	Boom Angle (deg)	Jib Point Height (ft)	Over End Jib Capacity (lbs)	360° Jib Capacity (lbs)	
110	60	120	49.0	131.8	8,300	6,800	52.1	130.6	7,300 *	7,000	54.8	126.9	5,700 *	5,700 *	120
110	60	130	44.3	121.7	7,200	5,900	47.4	120.4	6,800 *	6,100	49.9	116.4	5,400 *	5,400 *	130
110	60	140	39.1	109.7	6,300	5,100	42.1	108.3	6,400 *	5,300					140
110	60	150	33.3	95.1	5,600	4,400	36.1	93.4	5,700	4,500					150
110	60	160	26.2	76.3	4,900	3,800									160
120	30	35	79.0	154.6	24,000 *	24,000 *									35
120	30	40	77.0	153.5	24,000 *	24,000 *	78.9	152.9	24,000 *	24,000 *					40
120	30	50	73.1	150.6	24,000 *	24,000 *	75.0	150.0	24,000 *	24,000 *	76.7	148.4	18,900 *	18,900 *	50
120	30	60	69.1	147.0	22,500	18,900	70.9	146.4	22,600 *	19,300	72.6	144.7	17,200 *	17,200 *	60
120	30	70	65.0	142.6	18,000	15,300	66.8	141.9	18,300	15,600	68.4	140.2	16,700 *	15,800	70
120	30	80	60.7	137.2	14,900	12,500	62.5	136.6	15,200	12,700	64.1	134.8	15,400	13,000	80
120	30	90	56.2	130.8	12,500	10,400	58.0	130.2	12,700	10,600	59.5	128.2	12,900	10,800	90
120	30	100	51.5	123.3	10,600	8,700	53.2	122.6	10,800	8,900	54.7	120.5	10,900	9,000	100
120	30	110	46.4	114.3	9,100	7,400	48.1	113.5	9,200	7,500	49.5	111.3	9,300	7,600	110
120	30	120	40.9	103.4	7,800	6,300	42.5	102.6	7,900	6,400					120
120	30	130	34.6	90.0	6,700	5,400	36.1	89.0	6,800	5,500					130
120	30	140	27.0	72.6	5,800	4,600									140
120	45	40	78.7	168.6	24,000 *	24,000 *									40
120	45	50	75.1	165.9	22,800 *	22,800 *	77.7	165.0	17,600 *	17,600 *					50
120	45	60	71.5	162.6	19,800 *	19,100	74.1	161.7	17,200 *	17,200 *	76.4	159.3	12,100 *	12,100 *	60
120	45	70	67.8	158.6	17,600 *	15,500	70.3	157.6	15,500 *	15,500 *	72.7	155.2	11,100 *	11,200 *	70
120	45	80	64.0	153.8	15,200	12,700	66.5	152.8	14,000 *	13,100	68.8	150.3	10,300 *	10,300 *	80
120	45	90	60.1	148.1	12,700	10,600	62.6	147.1	12,800 *	10,900	64.8	144.5	9,600 *	9,600 *	90
120	45	100	56.0	141.5	10,800	8,900	58.4	140.5	11,000	9,200	60.6	137.7	9,000 *	9,000 *	100
120	45	110	51.7	133.7	9,200	7,600	54.1	132.7	9,500	7,800	56.1	129.8	8,500 *	8,000	110
120	45	120	47.0	124.7	8,000	6,500	49.4	123.6	8,200	6,700	51.3	120.4	8,100 *	6,800	120
120	45	130	42.0	114.0	6,900	5,600	44.3	112.7	7,100	5,700					130
120	45	140	36.5	101.1	6,000	4,800	38.6	99.7	6,100	4,900					140
120	45	150	30.0	84.9	5,200	4,100									150

**LS-138H II - w/ 44" x 54" Tube Boom, w/ 24" x 32" Tube Jib, w/ "AB" Ctw**

Refer to the Tubular Jib Notes for Open Throat Boom in this Crane Rating Manual before operating the machine.

Boom Length (ft)	Jib Length (ft)	Jib Load Radius (ft)	Jib Angle to Boom												Jib Load Radius (ft)
			5 Degrees				15 Degrees				25 Degrees				
			Boom Angle (deg)	Jib Point Height (ft)	Over End Jib Capacity (lbs)	360° Jib Capacity (lbs)	Boom Angle (deg)	Jib Point Height (ft)	Over End Jib Capacity (lbs)	360° Jib Capacity (lbs)	Boom Angle (deg)	Jib Point Height (ft)	Over End Jib Capacity (lbs)	360° Jib Capacity (lbs)	
120	60	50	76.8	181.6	19,300 *	19,300 *									50
120	60	60	73.5	178.6	17,200 *	17,200 *	76.7	177.5	13,200 *	13,200 *	79.6	174.7	9,100 *	9,100 *	60
120	60	70	70.2	174.9	15,500 *	15,500 *	73.3	173.9	11,700 *	11,700 *	76.2	171.0	8,300 *	8,300 *	70
120	60	80	66.7	170.6	13,800 *	12,800	69.8	169.5	10,600 *	10,600 *	72.7	166.5	7,700 *	7,700 *	80
120	60	90	63.2	165.6	12,400 *	10,700	66.3	164.5	9,600 *	9,600 *	69.1	161.4	7,100 *	7,100 *	90
120	60	100	59.6	159.7	10,900	9,100	62.6	158.6	8,800 *	8,800 *	65.3	155.3	6,600 *	6,600 *	100
120	60	110	55.8	152.9	9,400	7,700	58.8	151.8	8,100 *	8,000	61.4	148.4	6,200 *	6,200 *	110
120	60	120	51.8	145.1	8,100	6,600	54.7	143.9	7,600 *	6,900	57.3	140.3	5,900 *	5,900 *	120
120	60	130	47.5	136.1	7,000	5,700	50.5	134.8	7,100 *	5,900	52.9	130.9	5,600 *	5,600 *	130
120	60	140	43.0	125.5	6,100	4,900	45.8	124.1	6,300	5,100	48.2	120.0	5,300 *	5,200	140
120	60	150	38.0	113.1	5,400	4,200	40.7	111.5	5,500	4,400					150
120	60	160	32.3	97.9	4,700	3,600									160
130	30	35	79.6	164.8	24,000 *	24,000 *									35
130	30	40	77.8	163.8	24,000 *	24,000 *	79.6	163.1	24,000 *	24,000 *					40
130	30	50	74.2	161.1	24,000 *	24,000 *	75.9	160.5	24,000 *	24,000 *	77.6	158.8	19,300 *	19,300 *	50
130	30	60	70.5	157.7	22,300	18,700	72.2	157.1	22,500 *	19,100	73.8	155.4	17,600 *	17,600 *	60
130	30	70	66.6	153.6	17,800	15,100	68.3	153.0	18,100	15,400	69.9	151.2	17,100 *	15,700	70
130	30	80	62.7	148.7	14,700	12,300	64.4	148.0	15,000	12,600	65.9	146.2	15,300	12,800	80
130	30	90	58.6	142.8	12,300	10,200	60.3	142.2	12,500	10,400	61.7	140.3	12,700	10,600	90
130	30	100	54.3	136.0	10,400	8,500	55.9	135.3	10,600	8,700	57.3	133.3	10,700	8,900	100
130	30	110	49.8	127.9	8,900	7,200	51.4	127.2	9,000	7,400	52.7	125.0	9,100	7,500	110
130	30	120	44.9	118.4	7,600	6,100	46.4	117.6	7,700	6,200	47.7	115.2	7,800	6,300	120
130	30	130	39.5	107.0	6,500	5,200	41.0	106.1	6,600	5,300					130
130	30	140	33.5	93.0	5,600	4,400	34.9	91.9	5,700	4,500					140
130	30	150	26.1	74.9	4,900	3,700									150
130	45	40	79.3	178.8	24,000 *	24,000 *									40
130	45	50	76.0	176.3	22,700 *	22,700 *	78.4	175.4	18,000 *	18,000 *					50
130	45	60	72.6	173.2	19,900 *	18,900	75.0	172.3	17,200 *	17,200 *	77.3	169.8	12,400 *	12,400 *	60
130	45	70	69.1	169.4	17,600 *	15,300	71.5	168.5	16,000 *	15,700	73.7	166.0	11,400 *	11,400 *	70
130	45	80	65.6	165.0	15,000	12,500	68.0	164.0	14,500 *	12,900	70.1	161.4	10,600 *	10,600 *	80

**LS-138H II - w/ 44" x 54" Tube Boom, w/ 24" x 32" Tube Jib, w/ "AB" Cwt**

Refer to the Tubular Jib Notes for Open Throat Boom in this Crane Rating Manual before operating the machine.

Boom Length (ft)	Jib Length (ft)	Jib Load Radius (ft)	Jib Angle to Boom												Jib Load Radius (ft)
			5 Degrees				15 Degrees				25 Degrees				
			Boom Angle (deg)	Jib Point Height (ft)	Over End Jib Capacity (lbs)	360° Jib Capacity (lbs)	Boom Angle (deg)	Jib Point Height (ft)	Over End Jib Capacity (lbs)	360° Jib Capacity (lbs)	Boom Angle (deg)	Jib Point Height (ft)	Over End Jib Capacity (lbs)	360° Jib Capacity (lbs)	
130	45	90	62.0	159.7	12,500	10,400	64.3	158.7	12,800	10,700	66.4	156.1	9,900 *	9,900 *	90
130	45	100	58.2	153.6	10,600	8,700	60.5	152.6	10,900	9,000	62.5	149.8	9,300 *	9,200	100
130	45	110	54.2	146.5	9,000	7,400	56.5	145.5	9,300	7,600	58.5	142.6	8,800 *	7,800	110
130	45	120	50.0	138.3	7,800	6,300	52.3	137.2	8,000	6,500	54.2	134.2	8,100	6,600	120
130	45	130	45.6	128.8	6,700	5,300	47.8	127.6	6,900	5,500	49.6	124.4	7,000	5,700	130
130	45	140	40.7	117.6	5,800	4,600	42.9	116.3	5,900	4,700					140
130	45	150	35.3	104.2	5,000	3,900	37.4	102.7	5,100	4,000					150
130	45	160	29.0	87.4	4,400	3,300									160
130	60	50	77.5	191.9	19,200 *	19,200 *									50
130	60	60	74.4	189.1	17,200 *	17,200 *	77.4	188.0	13,500 *	13,600 *					60
130	60	70	71.2	185.7	15,500 *	15,400	74.2	184.5	12,100 *	12,100 *	77.0	181.6	8,500 *	8,500 *	70
130	60	80	68.0	181.6	13,800 *	12,600	71.0	180.5	10,900 *	10,900 *	73.7	177.5	7,800 *	7,800 *	80
130	60	90	64.7	176.9	12,500 *	10,500	67.6	175.7	9,900 *	9,900 *	70.3	172.6	7,300 *	7,300 *	90
130	60	100	61.3	171.4	10,700	8,800	64.2	170.2	9,100 *	9,100 *	66.8	167.0	6,800 *	6,800 *	100
130	60	110	57.8	165.1	9,200	7,500	60.7	163.9	8,400 *	7,800	63.2	160.6	6,400 *	6,400 *	110
130	60	120	54.1	157.9	7,900	6,400	57.0	156.7	7,900 *	6,700	59.4	153.2	6,000 *	6,000 *	120
130	60	130	50.3	149.7	6,800	5,500	53.1	148.4	7,100	5,700	55.5	144.7	5,700 *	5,700 *	130
130	60	140	46.2	140.2	5,900	4,700	48.9	138.8	6,100	4,900	51.2	134.9	5,500 *	5,100	140
130	60	150	41.8	129.2	5,200	4,000	44.4	127.7	5,300	4,200	46.6	123.4	5,300 *	4,300	150
130	60	160	36.9	116.3	4,500	3,400	39.5	114.6	4,600	3,500					160
130	60	170	31.3	100.6	3,900	2,900									170
140	30	40	78.6	174.0	24,000 *	24,000 *									40
140	30	50	75.1	171.5	24,000 *	24,000 *	76.8	170.9	24,000 *	24,000 *	78.3	169.2	19,600 *	19,600 *	50
140	30	60	71.6	168.4	22,100	18,500	73.3	167.7	21,900 *	18,900	74.8	166.0	18,000 *	18,000 *	60
140	30	70	68.1	164.5	17,600	14,900	69.7	163.9	18,000	15,200	71.2	162.1	17,200 *	15,500	70
140	30	80	64.4	159.9	14,600	12,100	66.0	159.3	14,800	12,400	67.4	157.5	15,100	12,600	80
140	30	90	60.6	154.5	12,100	10,000	62.2	153.9	12,300	10,200	63.6	152.0	12,600	10,400	90
140	30	100	56.7	148.2	10,200	8,300	58.2	147.5	10,400	8,500	59.6	145.6	10,600	8,700	100
140	30	110	52.6	140.9	8,700	7,000	54.1	140.2	8,800	7,200	55.4	138.1	9,000	7,300	110
140	30	120	48.2	132.4	7,400	5,900	49.7	131.6	7,500	6,000	50.9	129.4	7,600	6,100	120

**LS-138H II - w/ 44" x 54" Tube Boom, w/ 24" x 32" Tube Jib, w/ "AB" Cwt**

Refer to the Tubular Jib Notes for Open Throat Boom in this Crane Rating Manual before operating the machine.

Boom Length (ft)	Jib Length (ft)	Jib Load Radius (ft)	Jib Angle to Boom												Jib Load Radius (ft)
			5 Degrees				15 Degrees				25 Degrees				
			Boom Angle (deg)	Jib Point Height (ft)	Over End Jib Capacity (lbs)	360° Jib Capacity (lbs)	Boom Angle (deg)	Jib Point Height (ft)	Over End Jib Capacity (lbs)	360° Jib Capacity (lbs)	Boom Angle (deg)	Jib Point Height (ft)	Over End Jib Capacity (lbs)	360° Jib Capacity (lbs)	
140	30	130	43.5	122.4	6,300	5,000	44.9	121.5	6,400	5,100	46.1	119.1	6,500	5,200	130
140	30	140	38.3	110.4	5,400	4,200	39.7	109.5	5,500	4,300					140
140	30	150	32.4	95.9	4,700	3,500									150
140	30	160	25.3	77.1	4,000	2,900									160
140	45	40	79.9	189.0	24,000 *	24,000 *									40
140	45	50	76.7	186.7	22,200 *	22,200 *	79.0	185.7	18,400 *	18,400 *					50
140	45	60	73.6	183.8	19,400 *	18,700	75.8	182.8	17,200 *	17,200 *	78.0	180.3	12,600 *	12,600 *	60
140	45	70	70.3	180.2	17,200 *	15,100	72.6	179.2	15,800 *	15,600	74.7	176.7	11,600 *	11,600 *	70
140	45	80	67.0	176.0	14,800	12,300	69.2	175.0	14,400 *	12,700	71.3	172.5	10,800 *	10,800 *	80
140	45	90	63.6	171.1	12,300	10,200	65.8	170.1	12,700	10,500	67.8	167.5	10,100 *	10,100 *	90
140	45	100	60.1	165.4	10,400	8,500	62.3	164.4	10,700	8,800	64.2	161.7	9,500 *	9,100	100
140	45	110	56.4	158.9	8,800	7,200	58.6	157.8	9,100	7,400	60.5	155.0	9,000 *	7,700	110
140	45	120	52.6	151.4	7,600	6,100	54.7	150.3	7,800	6,300	56.6	147.3	8,000	6,500	120
140	45	130	48.6	142.8	6,500	5,100	50.7	141.6	6,700	5,300	52.4	138.5	6,900	5,500	130
140	45	140	44.3	132.8	5,600	4,300	46.3	131.6	5,800	4,500	47.9	128.2	5,900	4,600	140
140	45	150	39.6	121.1	4,800	3,700	41.5	119.8	5,000	3,800					150
140	45	160	34.3	107.2	4,200	3,100	36.2	105.6	4,300	3,200					160
140	45	170	28.2	89.9	3,600	2,600									170
140	60	50	78.1	202.2	19,000 *	19,000 *									50
140	60	60	75.2	199.5	17,200 *	17,200 *	78.0	198.4	13,900 *	13,900 *					60
140	60	70	72.2	196.3	15,200 *	15,200 *	75.0	195.1	12,400 *	12,400 *	77.7	192.2	8,600 *	8,600 *	70
140	60	80	69.2	192.5	13,600 *	12,400	72.0	191.3	11,200 *	11,200 *	74.6	188.3	8,000 *	8,000 *	80
140	60	90	66.1	188.0	12,300 *	10,300	68.9	186.9	10,300 *	10,300 *	71.4	183.7	7,400 *	7,400 *	90
140	60	100	62.9	182.9	10,500	8,600	65.6	181.7	9,400 *	9,000	68.1	178.5	6,900 *	6,900 *	100
140	60	110	59.6	177.0	9,000	7,300	62.3	175.8	8,700 *	7,600	64.8	172.5	6,500 *	6,500 *	110
140	60	120	56.2	170.3	7,700	6,200	58.9	169.1	8,000	6,500	61.3	165.6	6,200 *	6,200 *	120
140	60	130	52.7	162.7	6,600	5,200	55.3	161.5	6,900	5,500	57.6	157.8	5,900 *	5,700	130
140	60	140	48.9	154.1	5,700	4,500	51.5	152.8	5,900	4,700	53.8	148.9	5,600 *	4,900	140
140	60	150	44.9	144.2	4,900	3,800	47.5	142.8	5,100	4,000	49.6	138.6	5,300	4,100	150
140	60	160	40.6	132.8	4,300	3,200	43.1	131.2	4,400	3,400					160



**LS-138H II - w/ 44" x 54" Tube Boom, w/ 24" x 32" Tube Jib, w/ "AB" Cwt**

Refer to the Tubular Jib Notes for Open Throat Boom in this Crane Rating Manual before operating the machine.

Boom Length (ft)	Jib Length (ft)	Jib Load Radius (ft)	Jib Angle to Boom												Jib Load Radius (ft)
			5 Degrees				15 Degrees				25 Degrees				
			Boom Angle (deg)	Jib Point Height (ft)	Over End Jib Capacity (lbs)	360° Jib Capacity (lbs)	Boom Angle (deg)	Jib Point Height (ft)	Over End Jib Capacity (lbs)	360° Jib Capacity (lbs)	Boom Angle (deg)	Jib Point Height (ft)	Over End Jib Capacity (lbs)	360° Jib Capacity (lbs)	
140	60	170	35.9	119.4	3,700	2,700	38.3	117.6	3,800	2,800					170
140	60	180	30.5	103.2	3,200	2,200									180
150	30	40	79.2	184.2	24,000 *	24,000 *									40
150	30	50	76.0	181.9	24,000 *	23,900	77.5	181.2	23,700 *	23,700 *	79.0	179.6	19,900 *	19,900 *	50
150	30	60	72.7	178.9	21,900	18,300	74.2	178.3	21,300 *	18,700	75.7	176.6	18,400 *	18,300 *	60
150	30	70	69.3	175.3	17,400	14,700	70.9	174.7	17,800	15,000	72.3	172.9	17,000 *	15,400	70
150	30	80	65.9	171.0	14,400	11,900	67.4	170.4	14,700	12,200	68.8	168.6	14,900	12,500	80
150	30	90	62.4	166.0	11,900	9,800	63.9	165.3	12,200	10,000	65.2	163.5	12,400	10,300	90
150	30	100	58.8	160.2	10,000	8,100	60.2	159.5	10,200	8,300	61.5	157.6	10,400	8,500	100
150	30	110	55.0	153.4	8,400	6,800	56.4	152.7	8,600	7,000	57.7	150.7	8,800	7,100	110
150	30	120	51.0	145.7	7,200	5,700	52.4	144.9	7,300	5,800	53.6	142.8	7,500	6,000	120
150	30	130	46.7	136.7	6,100	4,800	48.1	135.9	6,300	4,900	49.3	133.6	6,400	5,000	130
150	30	140	42.2	126.2	5,200	4,000	43.5	125.3	5,300	4,100					140
150	30	150	37.2	113.8	4,500	3,300	38.5	112.8	4,600	3,400					150
150	30	160	31.5	98.7	3,800	2,700									160
150	45	50	77.4	197.0	21,600 *	21,600 *	79.6	196.0	18,800 *	18,800 *					50
150	45	60	74.4	194.2	19,100 *	18,500	76.6	193.2	17,200 *	17,200 *	78.6	190.8	12,800 *	12,800 *	60
150	45	70	71.4	190.9	17,000 *	14,900	73.5	189.9	15,600 *	15,400	75.5	187.4	11,800 *	11,800 *	70
150	45	80	68.2	186.9	14,600	12,100	70.4	185.9	14,200 *	12,500	72.3	183.4	11,000 *	11,000 *	80
150	45	90	65.0	182.3	12,100	10,000	67.2	181.3	12,500	10,300	69.1	178.7	10,300 *	10,300 *	90
150	45	100	61.8	177.0	10,200	8,300	63.8	176.0	10,500	8,600	65.7	173.3	9,700 *	8,900	100
150	45	110	58.4	170.9	8,600	7,000	60.4	169.9	8,900	7,200	62.2	167.1	9,200	7,500	110
150	45	120	54.8	164.0	7,400	5,900	56.9	162.9	7,600	6,100	58.6	160.0	7,800	6,300	120
150	45	130	51.1	156.1	6,300	4,900	53.1	155.0	6,500	5,100	54.8	151.9	6,700	5,300	130
150	45	140	47.2	147.1	5,400	4,100	49.2	145.9	5,600	4,300	50.8	142.6	5,700	4,500	140
150	45	150	43.0	136.7	4,600	3,500	45.0	135.4	4,800	3,600	46.5	131.9	4,900	3,700	150
150	45	160	38.5	124.5	3,900	2,900	40.3	123.1	4,100	3,000					160
150	45	170	33.4	110.1	3,400	2,400									170
150	45	180	27.4	92.2	2,800	1,900									180

**LS-138H II - w/ 44" x 54" Tube Boom, w/ 24" x 32" Tube Jib, w/ "AB" Cwt**

Refer to the Tubular Jib Notes for Open Throat Boom in this Crane Rating Manual before operating the machine.

Boom Length (ft)	Jib Length (ft)	Jib Load Radius (ft)	Jib Angle to Boom												Jib Load Radius (ft)
			5 Degrees				15 Degrees				25 Degrees				
			Boom Angle (deg)	Jib Point Height (ft)	Over End Jib Capacity (lbs)	360° Jib Capacity (lbs)	Boom Angle (deg)	Jib Point Height (ft)	Over End Jib Capacity (lbs)	360° Jib Capacity (lbs)	Boom Angle (deg)	Jib Point Height (ft)	Over End Jib Capacity (lbs)	360° Jib Capacity (lbs)	
150	60	50	78.7	212.5	18,700 *	18,700 *									50
150	60	60	75.9	209.9	16,900 *	16,900 *	78.6	208.8	14,200 *	14,200 *					60
150	60	70	73.1	206.9	15,100 *	15,100 *	75.8	205.7	12,700 *	12,700 *	78.3	202.7	8,700 *	8,700 *	70
150	60	80	70.2	203.2	13,500 *	12,200	72.9	202.1	11,500 *	11,600 *	75.4	199.0	8,100 *	8,100 *	80
150	60	90	67.3	199.0	12,200	10,100	69.9	197.8	10,600 *	10,600 *	72.4	194.7	7,600 *	7,600 *	90
150	60	100	64.3	194.2	10,300	8,400	66.9	193.0	9,700 *	8,900	69.3	189.8	7,100 *	7,100 *	100
150	60	110	61.2	188.7	8,800	7,100	63.8	187.5	9,000 *	7,400	66.2	184.1	6,700 *	6,700 *	110
150	60	120	58.0	182.5	7,500	6,000	60.6	181.2	7,800	6,300	62.9	177.7	6,300 *	6,300 *	120
150	60	130	54.7	175.4	6,400	5,000	57.3	174.1	6,700	5,300	59.5	170.5	6,000 *	5,600	130
150	60	140	51.3	167.4	5,500	4,200	53.8	166.1	5,800	4,500	55.9	162.3	5,700 *	4,700	140
150	60	150	47.6	158.4	4,700	3,600	50.1	157.0	4,900	3,800	52.2	153.0	5,100	4,000	150
150	60	160	43.8	148.1	4,100	3,000	46.2	146.6	4,200	3,200	48.2	142.3	4,400	3,300	160
150	60	170	39.6	136.3	3,500	2,500	41.9	134.7	3,600	2,600					170
150	60	180	35.0	122.4	2,900	2,000	37.3	120.6	3,100	2,100					180
150	60	190	29.7	105.7	2,500	1,600									190
160	30	40	79.8	194.4	24,000 *	24,000 *									40
160	30	50	76.7	192.2	24,000 *	23,700	78.2	191.5	22,600 *	22,600 *	79.6	189.9	20,000 *	20,000 *	50
160	30	60	73.6	189.4	21,700	18,100	75.1	188.8	20,400 *	18,600	76.4	187.1	18,500 *	18,500 *	60
160	30	70	70.5	186.0	17,200	14,500	71.9	185.4	17,600	14,900	73.3	183.6	16,900 *	15,200	70
160	30	80	67.2	182.0	14,200	11,700	68.7	181.3	14,500	12,000	70.0	179.5	14,800	12,300	80
160	30	90	64.0	177.3	11,700	9,600	65.4	176.6	12,000	9,900	66.7	174.8	12,200	10,100	90
160	30	100	60.6	171.9	9,800	7,900	62.0	171.2	10,000	8,100	63.2	169.3	10,200	8,400	100
160	30	110	57.0	165.6	8,200	6,600	58.4	164.9	8,400	6,800	59.6	162.9	8,600	6,900	110
160	30	120	53.4	158.5	7,000	5,500	54.7	157.7	7,100	5,600	55.9	155.6	7,300	5,800	120
160	30	130	49.5	150.3	5,900	4,600	50.9	149.5	6,100	4,700	52.0	147.3	6,200	4,800	130
160	30	140	45.4	140.8	5,000	3,800	46.7	140.0	5,100	3,900	47.8	137.6	5,200	4,000	140
160	30	150	41.0	129.9	4,300	3,100	42.3	129.0	4,400	3,200					150
160	30	160	36.1	117.0	3,600	2,500	37.4	115.9	3,700	2,600					160
160	30	170	30.6	101.4	3,000	2,000									170
160	45	50	78.0	207.3	20,800 *	20,800 *									50

**LS-138H II - w/ 44" x 54" Tube Boom, w/ 24" x 32" Tube Jib, w/ "AB" Cwt**

Refer to the Tubular Jib Notes for Open Throat Boom in this Crane Rating Manual before operating the machine.

Boom Length (ft)	Jib Length (ft)	Jib Load Radius (ft)	Jib Angle to Boom												Jib Load Radius (ft)
			5 Degrees				15 Degrees				25 Degrees				
			Boom Angle (deg)	Jib Point Height (ft)	Over End Jib Capacity (lbs)	360° Jib Capacity (lbs)	Boom Angle (deg)	Jib Point Height (ft)	Over End Jib Capacity (lbs)	360° Jib Capacity (lbs)	Boom Angle (deg)	Jib Point Height (ft)	Over End Jib Capacity (lbs)	360° Jib Capacity (lbs)	
160	45	60	75.2	204.7	18,500 *	18,300	77.3	203.6	16,700 *	16,700 *	79.2	201.2	13,000 *	13,000 *	60
160	45	70	72.3	201.5	17,000 *	14,700	74.3	200.5	15,200 *	15,200 *	76.3	198.0	12,000 *	12,000 *	70
160	45	80	69.3	197.8	14,400	11,900	71.4	196.7	13,900 *	12,400	73.3	194.2	11,200 *	11,200 *	80
160	45	90	66.3	193.4	11,900	9,800	68.4	192.4	12,300	10,200	70.2	189.8	10,500 *	10,500	90
160	45	100	63.2	188.4	10,000	8,100	65.2	187.4	10,300	8,400	67.0	184.7	9,900 *	8,700	100
160	45	110	60.1	182.7	8,400	6,800	62.0	181.7	8,700	7,000	63.8	178.9	9,000	7,300	110
160	45	120	56.8	176.3	7,100	5,600	58.7	175.2	7,400	5,900	60.4	172.3	7,600	6,100	120
160	45	130	53.4	169.0	6,100	4,700	55.3	167.9	6,300	4,900	56.9	164.8	6,500	5,100	130
160	45	140	49.8	160.7	5,200	3,900	51.7	159.5	5,400	4,100	53.3	156.3	5,500	4,300	140
160	45	150	46.0	151.2	4,400	3,200	47.8	150.0	4,600	3,400	49.3	146.6	4,700	3,600	150
160	45	160	41.9	140.4	3,700	2,700	43.7	139.1	3,900	2,800					160
160	45	170	37.5	127.9	3,100	2,100	39.2	126.4	3,300	2,300					170
160	45	180	32.5	112.9	2,600	1,700									180
160	45	190	26.7	94.5	2,200										190
160	60	50	79.2	222.7	17,900 *	17,900 *									50
160	60	60	76.6	220.3	16,400 *	16,400 *	79.1	219.1	14,100 *	14,100 *					60
160	60	70	73.9	217.4	14,700 *	14,700 *	76.4	216.2	13,000 *	13,000 *	78.9	213.1	8,900 *	8,900 *	70
160	60	80	71.1	213.9	13,300 *	12,100	73.7	212.7	11,800 *	11,800 *	76.1	209.6	8,200 *	8,200 *	80
160	60	90	68.4	209.9	12,100	9,900	70.9	208.7	10,800 *	10,400	73.2	205.6	7,700 *	7,700 *	90
160	60	100	65.5	205.4	10,100	8,200	68.0	204.2	10,000 *	8,700	70.4	200.9	7,200 *	7,200 *	100
160	60	110	62.6	200.2	8,600	6,900	65.1	199.0	8,900	7,300	67.4	195.6	6,800 *	6,800 *	110
160	60	120	59.6	194.3	7,300	5,800	62.1	193.1	7,600	6,100	64.3	189.6	6,500 *	6,400	120
160	60	130	56.6	187.7	6,200	4,800	59.0	186.5	6,500	5,100	61.2	182.9	6,100 *	5,400	130
160	60	140	53.4	180.3	5,300	4,000	55.8	179.0	5,600	4,300	57.9	175.3	5,800	4,500	140
160	60	150	50.0	172.0	4,500	3,400	52.4	170.6	4,800	3,600	54.4	166.7	5,000	3,800	150
160	60	160	46.5	162.6	3,800	2,800	48.8	161.2	4,000	3,000	50.7	157.0	4,200	3,100	160
160	60	170	42.7	152.0	3,300	2,200	45.0	150.4	3,400	2,400	46.8	145.9	3,600	2,600	170
160	60	180	38.6	139.7	2,700	1,800	40.9	138.0	2,900	1,900					180
160	60	190	34.1	125.4	2,300		36.3	123.4	2,400	1,500					190
160	60	200	29.0	108.2	1,900										200

**LS-138H II - w/ 44" x 54" Tube Boom, w/ 24" x 32" Tube Jib, w/ "AB" Cwt**

Refer to the Tubular Jib Notes for Open Throat Boom in this Crane Rating Manual before operating the machine.

Boom Length (ft)	Jib Length (ft)	Jib Load Radius (ft)	Jib Angle to Boom												Jib Load Radius (ft)
			5 Degrees				15 Degrees				25 Degrees				
			Boom Angle (deg)	Jib Point Height (ft)	Over End Jib Capacity (lbs)	360° Jib Capacity (lbs)	Boom Angle (deg)	Jib Point Height (ft)	Over End Jib Capacity (lbs)	360° Jib Capacity (lbs)	Boom Angle (deg)	Jib Point Height (ft)	Over End Jib Capacity (lbs)	360° Jib Capacity (lbs)	
170	30	50	77.4	202.5	21,500 *	21,500 *	78.8	201.8	20,200 *	20,200 *					50
170	30	60	74.4	199.9	20,600 *	17,900	75.9	199.2	19,200 *	18,400	77.1	197.5	16,300 *	16,300 *	60
170	30	70	71.5	196.6	16,900 *	14,300	72.9	196.0	17,400	14,700	74.1	194.2	15,700 *	15,100	70
170	30	80	68.4	192.8	14,000	11,500	69.8	192.2	14,300	11,800	71.1	190.4	14,600	12,100	80
170	30	90	65.3	188.4	11,500	9,400	66.7	187.7	11,800	9,700	67.9	185.9	12,100	9,900	90
170	30	100	62.2	183.3	9,600	7,700	63.5	182.6	9,800	8,000	64.7	180.8	10,100	8,200	100
170	30	110	58.9	177.5	8,000	6,400	60.2	176.8	8,300	6,600	61.4	174.8	8,400	6,800	110
170	30	120	55.5	170.9	6,800	5,300	56.8	170.1	7,000	5,500	57.9	168.1	7,100	5,600	120
170	30	130	51.9	163.3	5,700	4,400	53.2	162.6	5,900	4,500	54.3	160.4	6,000	4,600	130
170	30	140	48.2	154.7	4,800	3,600	49.5	153.9	5,000	3,700	50.5	151.6	5,100	3,800	140
170	30	150	44.2	144.9	4,100	2,900	45.4	144.0	4,200	3,000	46.4	141.6	4,300	3,100	150
170	30	160	39.9	133.5	3,400	2,300	41.1	132.5	3,500	2,400					160
170	30	170	35.2	120.1	2,800	1,800	36.3	119.0	2,900	1,900					170
170	30	180	29.8	104.0	2,300										180
170	45	50	78.6	217.6	18,800 *	18,800 *									50
170	45	60	75.9	215.1	17,700 *	17,700 *	77.9	214.0	15,400 *	15,400 *	79.7	211.5	12,900 *	12,900 *	60
170	45	70	73.1	212.0	16,300 *	14,500	75.1	211.0	14,600 *	14,600 *	76.9	208.5	12,200 *	12,200 *	70
170	45	80	70.3	208.5	14,200	11,700	72.3	207.5	13,400 *	12,200	74.1	204.9	11,400 *	11,400 *	80
170	45	90	67.5	204.4	11,700	9,600	69.4	203.3	12,100	10,000	71.2	200.7	10,700 *	10,400	90
170	45	100	64.6	199.7	9,800	7,900	66.5	198.6	10,100	8,300	68.2	195.9	10,100 *	8,600	100
170	45	110	61.6	194.3	8,200	6,500	63.5	193.3	8,500	6,900	65.2	190.5	8,800	7,100	110
170	45	120	58.5	188.3	6,900	5,400	60.4	187.2	7,200	5,700	62.0	184.3	7,500	6,000	120
170	45	130	55.3	181.5	5,900	4,500	57.2	180.4	6,100	4,700	58.8	177.4	6,300	5,000	130
170	45	140	52.0	173.8	5,000	3,700	53.8	172.6	5,200	3,900	55.4	169.5	5,400	4,100	140
170	45	150	48.5	165.1	4,200	3,000	50.3	163.9	4,400	3,200	51.8	160.6	4,500	3,400	150
170	45	160	44.8	155.3	3,500	2,400	46.6	154.0	3,700	2,600	48.0	150.6	3,800	2,700	160
170	45	170	40.9	144.1	2,900	1,900	42.6	142.7	3,100	2,100					170
170	45	180	36.6	131.1	2,400	1,500	38.2	129.6	2,500	1,600					180
170	45	190	31.7	115.7	2,000										190
170	60	50	79.7	232.9	15,500 *	15,500 *									50

**LS-138H II - w/ 44" x 54" Tube Boom, w/ 24" x 32" Tube Jib, w/ "AB" Cwt**

Refer to the Tubular Jib Notes for Open Throat Boom in this Crane Rating Manual before operating the machine.

Boom Length (ft)	Jib Length (ft)	Jib Load Radius (ft)	Jib Angle to Boom												Jib Load Radius (ft)
			5 Degrees				15 Degrees				25 Degrees				
			Boom Angle (deg)	Jib Point Height (ft)	Over End Jib Capacity (lbs)	360° Jib Capacity (lbs)	Boom Angle (deg)	Jib Point Height (ft)	Over End Jib Capacity (lbs)	360° Jib Capacity (lbs)	Boom Angle (deg)	Jib Point Height (ft)	Over End Jib Capacity (lbs)	360° Jib Capacity (lbs)	
170	60	60	77.1	230.6	14,900 *	14,900 *	79.6	229.4	12,800 *	12,800 *					60
170	60	70	74.6	227.8	14,200 *	14,200 *	77.1	226.6	12,400 *	12,400 *	79.4	223.5	9,000 *	9,000 *	70
170	60	80	72.0	224.6	12,900 *	11,900	74.4	223.3	11,500 *	11,500 *	76.7	220.2	8,400 *	8,400 *	80
170	60	90	69.4	220.8	11,800 *	9,700	71.8	219.6	10,600 *	10,300	74.0	216.4	7,800 *	7,800 *	90
170	60	100	66.7	216.4	9,900	8,000	69.1	215.2	9,800 *	8,500	71.3	211.9	7,400 *	7,400 *	100
170	60	110	63.9	211.5	8,300	6,700	66.3	210.3	8,800	7,100	68.5	206.9	6,900 *	7,000 *	110
170	60	120	61.1	206.0	7,100	5,600	63.5	204.8	7,400	5,900	65.6	201.3	6,600 *	6,300	120
170	60	130	58.2	199.8	6,000	4,600	60.5	198.5	6,300	4,900	62.6	195.0	6,300 *	5,200	130
170	60	140	55.2	192.9	5,100	3,800	57.5	191.6	5,400	4,100	59.5	187.9	5,600	4,400	140
170	60	150	52.1	185.1	4,300	3,100	54.4	183.8	4,600	3,400	56.3	179.9	4,800	3,600	150
170	60	160	48.8	176.5	3,600	2,500	51.1	175.0	3,900	2,800	53.0	171.0	4,100	3,000	160
170	60	170	45.4	166.7	3,000	2,000	47.6	165.2	3,200	2,200	49.4	160.9	3,400	2,400	170
170	60	180	41.7	155.7	2,500	1,600	43.9	154.0	2,700	1,700	45.6	149.4	2,800	1,900	180
170	60	190	37.7	143.0	2,100		39.8	141.2	2,200						190
170	60	200	33.3	128.3	1,600		35.4	126.3	1,800						200
180	30	50	78.0	212.8	19,100 *	19,100 *	79.3	212.1	18,000 *	18,000 *					50
180	30	60	75.2	210.2	18,200 *	17,700	76.5	209.6	17,100 *	17,100 *	77.8	207.9	14,600 *	14,600 *	60
180	30	70	72.4	207.2	16,500 *	14,100	73.7	206.5	15,500 *	14,500	74.9	204.8	14,000 *	14,000 *	70
180	30	80	69.5	203.6	13,800	11,300	70.8	202.9	14,100	11,700	72.0	201.2	13,400 *	12,000	80
180	30	90	66.6	199.4	11,300	9,200	67.9	198.8	11,600	9,500	69.1	196.9	11,900	9,700	90
180	30	100	63.6	194.6	9,400	7,500	64.9	194.0	9,600	7,800	66.0	192.1	9,900	8,000	100
180	30	110	60.5	189.2	7,800	6,200	61.8	188.5	8,100	6,400	62.9	186.5	8,300	6,600	110
180	30	120	57.3	183.0	6,600	5,100	58.6	182.3	6,800	5,300	59.7	180.2	6,900	5,400	120
180	30	130	54.0	176.0	5,500	4,100	55.3	175.2	5,700	4,300	56.3	173.1	5,800	4,500	130
180	30	140	50.6	168.0	4,600	3,400	51.8	167.3	4,800	3,500	52.8	165.1	4,900	3,600	140
180	30	150	47.0	159.1	3,800	2,700	48.1	158.2	4,000	2,800	49.1	155.9	4,100	2,900	150
180	30	160	43.1	148.8	3,200	2,100	44.3	147.9	3,300	2,200	45.1	145.4	3,400	2,300	160
180	30	170	38.9	137.0	2,600	1,600	40.0	136.0	2,700	1,700					170
180	30	180	34.3	123.2	2,100		35.4	122.1	2,100						180
180	45	50	79.1	227.8	16,000 *	16,000 *									50

**LS-138H II - w/ 44" x 54" Tube Boom, w/ 24" x 32" Tube Jib, w/ "AB" Ctw**

Refer to the Tubular Jib Notes for Open Throat Boom in this Crane Rating Manual before operating the machine.

Boom Length (ft)	Jib Length (ft)	Jib Load Radius (ft)	Jib Angle to Boom												Jib Load Radius (ft)
			5 Degrees				15 Degrees				25 Degrees				
			Boom Angle (deg)	Jib Point Height (ft)	Over End Jib Capacity (lbs)	360° Jib Capacity (lbs)	Boom Angle (deg)	Jib Point Height (ft)	Over End Jib Capacity (lbs)	360° Jib Capacity (lbs)	Boom Angle (deg)	Jib Point Height (ft)	Over End Jib Capacity (lbs)	360° Jib Capacity (lbs)	
180	45	60	76.5	225.4	15,300 *	15,300 *	78.4	224.3	13,800 *	13,800 *					60
180	45	70	73.9	222.5	14,600 *	14,300	75.8	221.5	13,300 *	13,300 *	77.5	218.9	11,300 *	11,300 *	70
180	45	80	71.2	219.2	14,000 *	11,500	73.1	218.1	12,700 *	12,000	74.8	215.5	10,800 *	10,800 *	80
180	45	90	68.5	215.3	11,500	9,400	70.4	214.2	11,900 *	9,800	72.1	211.6	10,500 *	10,200	90
180	45	100	65.8	210.8	9,600	7,700	67.6	209.7	10,000	8,100	69.3	207.0	10,100 *	8,400	100
180	45	110	63.0	205.8	8,000	6,300	64.8	204.7	8,400	6,700	66.4	201.9	8,700	7,000	110
180	45	120	60.1	200.1	6,700	5,200	61.9	199.0	7,000	5,500	63.4	196.1	7,300	5,800	120
180	45	130	57.1	193.7	5,700	4,300	58.9	192.6	5,900	4,600	60.4	189.6	6,200	4,800	130
180	45	140	54.0	186.5	4,800	3,500	55.7	185.4	5,000	3,700	57.2	182.3	5,200	3,900	140
180	45	150	50.7	178.5	4,000	2,800	52.5	177.3	4,200	3,000	53.9	174.1	4,400	3,200	150
180	45	160	47.4	169.4	3,300	2,200	49.1	168.2	3,500	2,400	50.4	164.8	3,600	2,600	160
180	45	170	43.8	159.3	2,700	1,700	45.4	157.9	2,900	1,900	46.7	154.4	3,000	2,000	170
180	45	180	39.9	147.6	2,200		41.5	146.2	2,300						180
180	45	190	35.7	134.2	1,700		37.3	132.7	1,900						190
180	60	60	77.7	240.9	13,400 *	13,400 *									60
180	60	70	75.2	238.3	12,900 *	12,900 *	77.6	237.0	11,200 *	11,200 *	79.8	233.9	9,000 *	9,000 *	70
180	60	80	72.8	235.1	12,300 *	11,700	75.1	233.9	10,800 *	10,800 *	77.3	230.7	8,500 *	8,500 *	80
180	60	90	70.2	231.5	11,300 *	9,500	72.6	230.3	10,200 *	10,100	74.7	227.1	7,900 *	7,900 *	90
180	60	100	67.7	227.4	9,700	7,800	70.0	226.2	9,400 *	8,300	72.1	222.9	7,500 *	7,500 *	100
180	60	110	65.1	222.7	8,100	6,500	67.4	221.5	8,600	6,900	69.5	218.1	7,100 *	7,100 *	110
180	60	120	62.4	217.5	6,900	5,300	64.7	216.2	7,300	5,700	66.7	212.8	6,700 *	6,100	120
180	60	130	59.7	211.7	5,800	4,400	61.9	210.4	6,100	4,800	63.9	206.8	6,400 *	5,100	130
180	60	140	56.9	205.1	4,900	3,600	59.1	203.8	5,200	3,900	61.1	200.2	5,500	4,200	140
180	60	150	53.9	197.9	4,100	2,900	56.1	196.5	4,400	3,200	58.1	192.7	4,600	3,400	150
180	60	160	50.9	189.8	3,400	2,300	53.1	188.4	3,700	2,600	54.9	184.4	3,900	2,800	160
180	60	170	47.7	180.8	2,800	1,800	49.9	179.3	3,000	2,000	51.6	175.1	3,200	2,200	170
180	60	180	44.4	170.7	2,300		46.5	169.1	2,500	1,500	48.2	164.7	2,700	1,700	180
180	60	190	40.8	159.3	1,800		42.8	157.6	2,000						190
180	60	200					38.9	144.4	1,600						200

**LS-138H II - w/ 44" x 54" Tube Boom, w/ 24" x 32" Tube Jib, w/ "AB" Cwt**

Refer to the Tubular Jib Notes for Open Throat Boom in this Crane Rating Manual before operating the machine.

Boom Length (ft)	Jib Length (ft)	Jib Load Radius (ft)	Jib Angle to Boom												Jib Load Radius (ft)
			5 Degrees				15 Degrees				25 Degrees				
			Boom Angle (deg)	Jib Point Height (ft)	Over End Jib Capacity (lbs)	360° Jib Capacity (lbs)	Boom Angle (deg)	Jib Point Height (ft)	Over End Jib Capacity (lbs)	360° Jib Capacity (lbs)	Boom Angle (deg)	Jib Point Height (ft)	Over End Jib Capacity (lbs)	360° Jib Capacity (lbs)	
190	30	50	78.5	223.0	16,100 *	16,100 *	79.8	222.3	15,200 *	15,200 *					50
190	30	60	75.9	220.6	15,300 *	15,300 *	77.2	219.9	14,500 *	14,500 *	78.4	218.2	13,100 *	13,100 *	60
190	30	70	73.2	217.7	14,600 *	13,900	74.5	217.0	13,800 *	13,800 *	75.6	215.3	12,500 *	12,500 *	70
190	30	80	70.5	214.3	13,600	11,100	71.7	213.6	13,100 *	11,500	72.9	211.9	12,000 *	11,800	80
190	30	90	67.7	210.3	11,100	9,000	68.9	209.7	11,400	9,300	70.1	207.9	11,400 *	9,600	90
190	30	100	64.9	205.8	9,200	7,300	66.1	205.1	9,500	7,600	67.2	203.3	9,700	7,800	100
190	30	110	62.0	200.7	7,600	6,000	63.2	200.0	7,900	6,200	64.3	198.0	8,100	6,400	110
190	30	120	59.0	194.8	6,400	4,900	60.2	194.1	6,600	5,100	61.2	192.1	6,800	5,200	120
190	30	130	55.9	188.3	5,300	3,900	57.1	187.5	5,500	4,100	58.1	185.5	5,600	4,300	130
190	30	140	52.7	180.9	4,400	3,100	53.9	180.1	4,600	3,300	54.8	178.0	4,700	3,400	140
190	30	150	49.3	172.6	3,600	2,500	50.5	171.8	3,800	2,600	51.4	169.6	3,900	2,700	150
190	30	160	45.8	163.3	2,800 *	1,900	46.9	162.4	3,100	2,000	47.8	160.0	3,200	2,100	160
190	30	170	42.0	152.6	1,500 *		43.1	151.7	2,000 *	1,500					170

