

# 534D9-45

## TELEHANDLER

## SPECIFICATIONS



### Performance

#### Rated Capacity

At 24" (610 mm) load center,  
9,000 lbs. (4,082 kg)

#### Maximum Lift Height

45' (13.7 m)

#### Frame Leveling

8 degrees

#### Lift Speed (boom retracted)

Empty 105 f.p.m. (32 m/min)  
Loaded 97 f.p.m. (29.5 m/min)

#### Boom Speed

Extend 100 f.p.m. (30.5 m/min)  
Retract 105 f.p.m. (32 m/min)

#### Travel Speeds Forward and Reverse

2WD 0-18 mph (29 km/hr)  
4WD 0-6 mph (9.7 km/hr)

#### Drawbar Pull

Loaded 20,000 lb (9,070 kg)

#### Operating Weight

With 48" (1.2 m) carriage and forks,  
24,420 lb (11,077 kg)

### Drive Line Specifications

#### Engine

Make and Model . . . John Deere 4045TF275  
Turbocharged  
Fuel . . . . . No. 2 Diesel  
Cycles . . . . . 4  
No. of Cylinders . . . . . 4  
Displacement . . . . . 276 cu. in. (4.5 L)  
Rated Speed . . . . . 2400 rpm  
Max. Gross BHP . . . . . 110 hp (82 kW)  
Fuel Tank . . . . . 38 gal. (151.4 L)

#### Engine Filters

Two-stage dry air cleaner — centrifugal pre-cleaner with continuous dust ejector plus cleanable and replaceable dry filter element. Visual service indicator.

Replaceable spin-on fuel filter. Full-flow replaceable spin-on engine oil filter.

#### Electrical System

Voltage — 12V  
Alternator — 65 amp  
Battery — 1050 Cold Cranking amps at 0°F

#### Hydrostatic Drive

6300 PSI (43,439 kPa) closed loop with piston pump and motors.

All hydraulic connections ORS and Code 62 O-ring flanges.

Common reservoir with implement hydraulics.

8 micron suction filter for charge pump.  
Self-contained, swashplate design, variable

displacement, over center, piston pump. Neutral start switch. (Park brake must also be engaged to start.)

2WD and 4WD inching.

2WD — 4WD switch on dash.

Electronically operated travel alarm mounted in counterweight area signals reverse movement.

#### Axles

Planetary hubs with piston motors on rear axle.

Piston motor-driven planetary front axle with high-bias, limited slip differential.

#### Brakes

Service — Hydraulic wet disc brake on each front wheel.

Hydraulic dynamic braking on front axle and both rear wheels.

#### Parking

Wet disc spring-applied electro/hydraulic release, fail safe on both front wheels.

Light on dashboard indicates when brakes are on.

Frame mounted right side rear view mirror.

#### Tires

13:00x24 — 12PR, G2 type.

#### Cab

Certified ROPS/FOPS structure, adjustable seat and horn.

Forward, neutral, reverse lever on left of steering column.

Single foot pedal control provides both braking and inching for lifting while maneuvering vehicle.

Electro/hydraulic traction lock valve for superior tractive effort.

#### Steering

Hydraulic power steering with manual backup. Rear wheel steering, 90° pivot around either front tire. Outside turning radius is less than chassis length.

#### Instruments

Volt meter, hourmeter, engine oil pressure, temperature, fuel gauge. All gauges protected by clear acrylic cover.

#### Controls

Grouped for operator comfort and convenience.

Key operated ignition/starter switch.

Boom lift and crowd on single joystick.

Right-hand tilt and sway lever.

Foot throttle.

Floor mounted traction lock switch.

### Hydraulic System-Implement

Single-section gear pump.

40 gal. (151.4 L) system capacity.

8 micron filter with visual service indicator and suction strainer.

Lift, crowd, tilt and sway cylinders have load checks to prevent dropping of load in the event of hose or other hydraulic failure.

### Accessories & Options

#### Cab Enclosure

Lockable, split door. Windshield wiper. Heater & defroster fan.

#### Light Group

Consists of 2 cab-mounted headlights, 1-backup/tail/stoplight and rotating beacon.

#### Auxiliary Hydraulic Circuit

Required for all attachments equipped with cylinders or other hydraulic components. Consists of valves, controls, hydraulic lines.

#### Radial Tires

#### Winch

#### Left Hand Tilt/Sway Control

#### Tilt on Joystick

#### Rear Axle Stabilization

### Attachments

#### Carriage

48" (1.2 m), 66" (1.7 m) & 72" (1.8 m)

#### Slope Pile Carriage

48" (1.2 m) and 66" (1.7 m)

#### 100° Swing Carriage

72" (1.8 m)

#### Pallet Forks

2" x 6" x 48" (50.8 mm x 152.4 mm x 1.2 m)

#### Cubing Forks

2" x 2" x 48" (50.8 mm x 50.8 mm x 1.2 m)

#### Vertical Mast

6' (1.8 m) with 48" (1.2 m)  
or 66" (1.7 m) Carriage

#### 100° Swing Mast

6' (1.8 m) with 48" (1.2 m)  
or 60" (1.7 m) Forks

#### Truss Boom With or Without Winch

10' (3.0 m)

#### Bucket

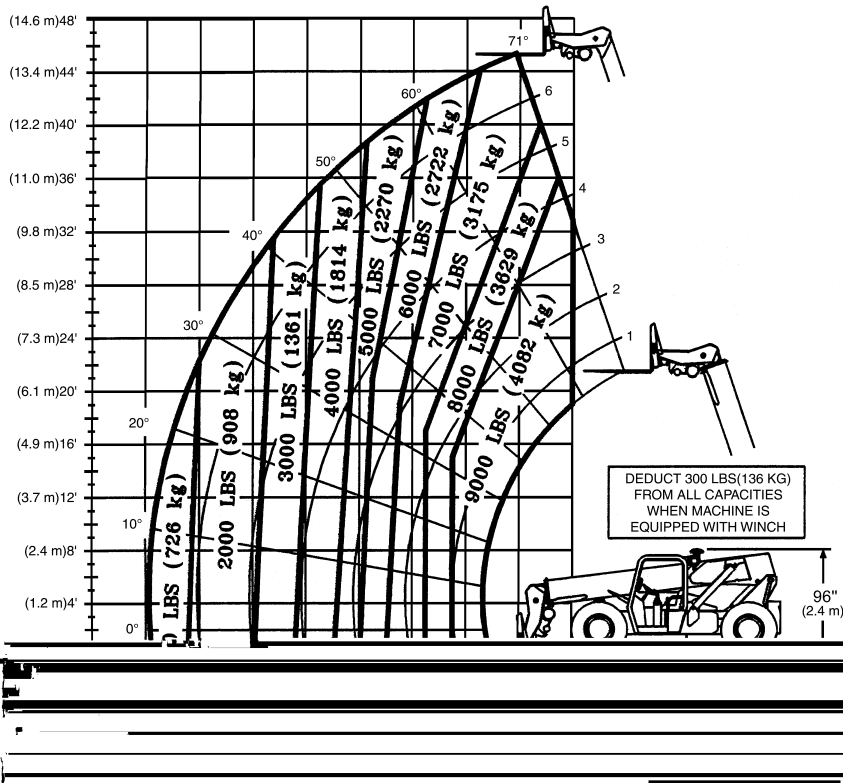
0.75 CY (0.57 m<sup>3</sup>) or 1.25 CY (0.95 m<sup>3</sup>)

#### Work Platform

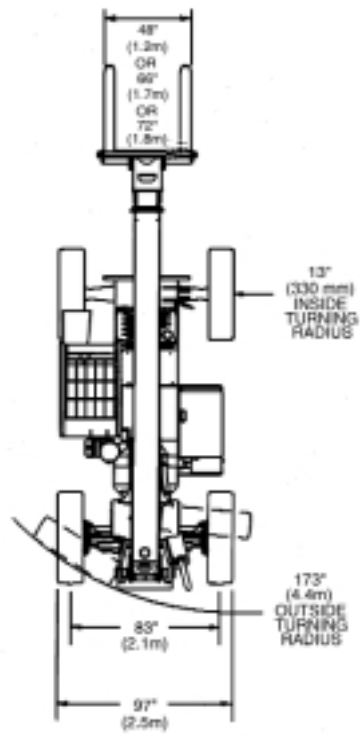
#### Instant Hook

# 534D9-45

## TELEHANDLER



**Max. Reach:**  
31.5 ft. (9.6 m)  
**Max. Lift:**  
45 ft. (13.7 m)



### IMPORTANT

Rated lift capacities shown are with machine equipped with carriage and pallet forks and on a firm, level surface with undamaged, properly inflated tires. Machine specifications and stability are based on rated lift capacities at specific boom angles and boom lengths. If specifications are critical, the proposed application should be discussed with your dealer.

DO NOT exceed rated lift capacity loads, as unstable and dangerous machine conditions will result.

DO NOT tip the machine forward to determine the allowable load.

Use only JLG approved attachments with the proper telehandler model/attachment load capacity chart displayed in the operator's cab. OSHA requires all rough terrain forklift operators to be trained according to OSHA 29 CFR 1910.178 (l).

*Due to continuous product improvements, JLG Industries reserves the right to make specification and/or equipment changes without prior notification. This machine meets or exceeds ASME B56.6-1998 as originally manufactured for intended applications.*



**JLG Industries, Inc.**  
1 JLG Drive  
McConnellsburg, PA 17233-9533  
Telephone 717-485-5161  
Toll-free in US 877-JLG-LIFT  
Fax 717-485-6417  
www.jlg.com